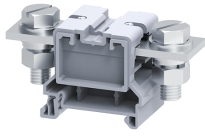


# CBB95



**connectwell**  
THE RIGHT CONNECTION

## 95 sq.mm Stud Type Power Terminal Blocks

CBB series Terminal Blocks are preferred for application using wires of large cross section. The Wire is crimped to a ring / fork lug and is screwed on to the flat current bar of the Terminal Block.

### TECHNICAL DATA

Rated Voltage	1000 V
Rated Current	232 A
Tightening Torque	10 Nm
Housing Material	Polymide
Product Function	Feed Through
Wire Entry Orientation	Side
Mounting Possibility	DIN 35/DIN 35-15 Rail
Stud Size	M10
Rated Surge Voltage	8 KV
Pollution Degree	3

### CONNECTION DATA

Conductor Cross Section Stranded min.	16 mm <sup>2</sup>
Conductor Cross Section Stranded max.	95 mm <sup>2</sup>
Conductor Cross Section AWG/Kcmil min	8 AWG
Conductor Cross Section AWG/Kcmil max	4/0 AWG
Conductor Cross Section Stranded with Ferrule/Lug min	16 mm <sup>2</sup>
Conductor Cross Section Stranded with Ferrule/Lug max	95 mm <sup>2</sup>

### DIMENSIONS

Height with DIN 35 x 15 mm rail	54.5 mm
Height with DIN 35 x 7.5 mm rail	47.3 mm
Length	92 mm
Width (Thickness)	38 mm

### ORDERING INFORMATION

CAT. NO.	DESCRIPTION	STD. PACK
CBB95	95 sq.mm Feed through Bolt/Nut Type Terminal Block in Grey colour	10
CBB95R	95 sq.mm Feed through Bolt/Nut Type Terminal Block in Red colour	10
CBB95Y	95 sq.mm Feed through Bolt/Nut Type Terminal Block in Yellow colour	10
CBB95BU	95 sq.mm Feed through Bolt/Nut Type Terminal Block in Blue colour	10
CBB95BK	95 sq.mm Feed through Bolt/Nut Type Terminal Block in Black colour	10
CBB95GN	95 sq.mm Feed through Bolt/Nut Type Terminal Block in Green colour	10
CBB95BR	95 sq.mm Feed through Bolt/Nut Type Terminal Block in Brown colour	10
CBB95O	95 sq.mm Feed through Bolt/Nut Type Terminal Block in Orange colour	10

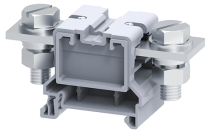
### ORDERING INFORMATION

CAT. NO.	DESCRIPTION	STD. PACK
CBB95W	95 sq.mm Feed through Bolt/Nut Type Terminal Block in White colour	10

### ACCESSORIES

IMAGES	CAT. NO.	DESCRIPTION	STD. PACK
	CA701-1M	Din 35 Rail unslotted 1 meter	50
	CA701-2M	Din 35 Rail unslotted 2 meter	50
	CA701-2M-S	Din 35 Rail slotted 2 meter	50
	CA701-1M-S	Din 35 Rail slotted 1 meter	50
	CA701-15-1M	Din 35 Rail 15 deep unslotted 1 meter	50
	CA701-15-1M-S	Din 35 Rail 15 deep slotted 1 meter	50
	CA701-15-2M	Din 35 Rail 15 deep unslotted 2 meter	50
	CA701-15-2M-S	Din 35 Rail 15 deep slotted 2 meter	50
	CA202	End Clamp in Polyamide suitable for Din 35 / Din 35-15 Rails	25
	CA702	End Clamp in Polyamide 66 suitable for Din 32 / Din 35 / Din 35-15 Rails	50
	CA802	End Clamp in Polyamide suitable for Din 35 / Din 35-15 Rails	50
	PPCBB1	Partition Plate in Grey colour	50
	CA791/2	Permanent Shorting Link for 2 way shorting	10
	CA791/3	Permanent Shorting Link for 3 way shorting	10
	CA509/K16	Marking Tag Blank suitable for CTS35UNA / CGT35U Terminal Blocks	100
	CBBPC2/100	Protective cover is available in 100 mm Length	10
	CBBPC2/160	Protective cover is available in 160 mm Length	10
	CBBPC2/200	Protective cover is available in 200 mm Length	10
	CBBPC2/250	Protective cover is available in 250 mm Length	10
	MC16	MARKER CARD 16MM PITCH WITH 24 TAGS	10

CBB95



**connectwell**  
THE RIGHT CONNECTION

**APPROVALS**



**NOTES**

The Rated current is with the use of copper (Cu) conductor/Wire

**RATINGS AS PER STANDARDS**

STANDARDS	UL 1059	CSA C.22.2 No:158	IEC/EN60947-7-1
Approvals	UL	CSA	CE
Conductor Cross Section Stranded min.	8 AWG	8 AWG	16 mm <sup>2</sup>
Conductor Cross Section Stranded max.	4/0 AWG	4/0 AWG	95 mm <sup>2</sup>
Rated Voltage	600 V	600 V	1000 V
Rated Current	230 A	230 A	232 A
Tightening Torque	90 lb-in	90 lb-in	10 Nm