



Representative picture

Technical information

According to IEC 60947-3

Rated thermal current (I _{th})	12 A
Rated insulation voltage (U _i)	500 V
Rated impulse withstand voltage (U _{imp})	4 kV

AC rated operational current

415 V	AC13A	10 A
415 V	AC21A	12 A
415 V	AC22A	12 A
415 V	AC23A	10 A

Rated conditional short-circuit current	5 kA
---	------

Rated maximum current (g _L -g _G)	16 A
---	------

Rated breaking capacity (400V; cos φ=0,45)	80 A
--	------

Rated short-time withstand current (1 sec)	100 A
--	-------

Mechanical durability (according to the standards, for other values please consult)

1000

Rigid copper conductor	2x4 mm ²
------------------------	---------------------

Flexible copper conductor	2x2,5 mm ²
---------------------------	-----------------------

Standards



Quality Telergon SAU

ISO 9001 & 14001



Normal service conditions:

Ambient air temperature (°C): -5°...+40°.

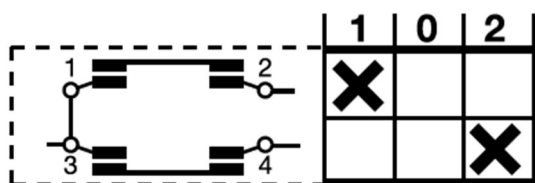
Maximum altitude: 2.000 m. Maximum humidity: 90%.

Pollution degree: 3 (standard for industrial applications).

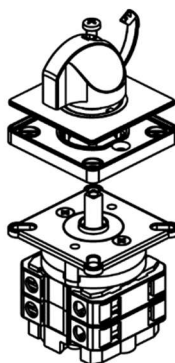
Rated frequency at AC utilization categories: 50/60 Hz.

Rated duties at utilization categories AC21A, AC22A and AC23A: Continuing (8 hours); uninterrupted.

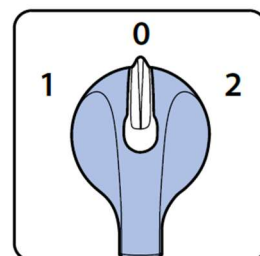
Diagram, connection & positions



Scheme



Fixing



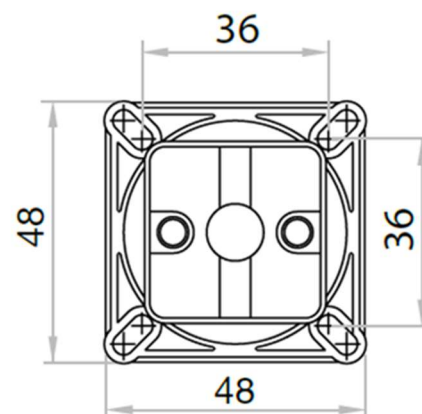
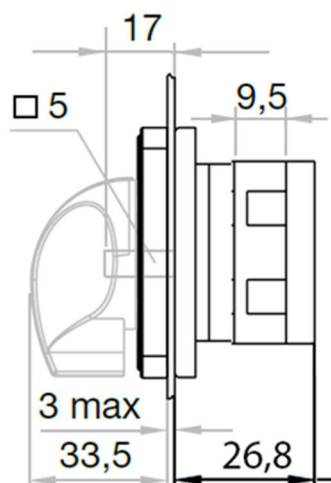
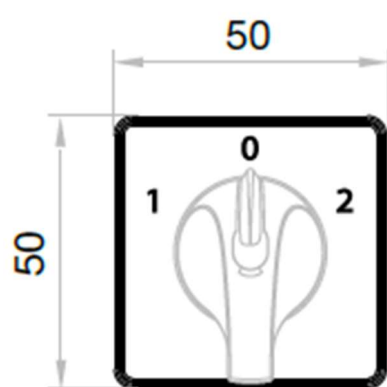
Positions

You can find detailed information about our products at www.telergon.com

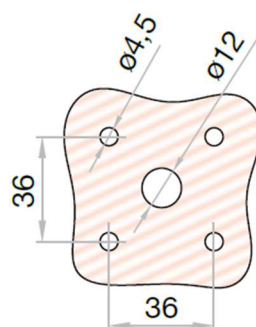


Cam switch
TP-001000400E1N1

TELERGON, SAU
Data subject to change without
notice (printed: 30/05/2023)



Frontal fixing
with 4 screws



You can find detailed information about our products at www.telergon.com



Cam switch
TP-001000400E1N1

TELERGON, SAU
Data subject to change without
notice (printed: 30/05/2023)