



Representative picture

Technical information

According to IEC 60947-3

Rated thermal current (I _{th})	50 A
Rated insulation voltage (U _i)	690 V
Rated impulse withstand voltage (U _{imp})	8 kV

AC rated operational current

415 V	AC21A	50 A
415 V	AC22A	50 A
415 V	AC23A	32 A

Rated conditional short-circuit current	10 kA
---	-------

Rated maximum current (g _L -g _G)	50 A
---	------

Rated breaking capacity (400V; cos φ=0,45)	320 A
--	-------

Rated short-time withstand current (1 sec)	800 A
--	-------

Mechanical durability (according to the standards, for other values please consult)	10000
---	-------

Rigid copper conductor	2x10 mm ²
------------------------	----------------------

Flexible copper conductor	2x6 mm ²
---------------------------	---------------------

Standards



Quality Telergon SAU

ISO 9001 & 14001



According to UL508 - CAN / CSA C22.2 N° 14

Rated thermal current (I _{th})	40 A
--	------

General use rating	600 Vac
--------------------	---------

AC rated operational power	3x240V	15 HP
----------------------------	--------	-------

Normal service conditions:

Ambient air temperature (°C): -5°...+40°.

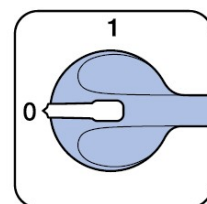
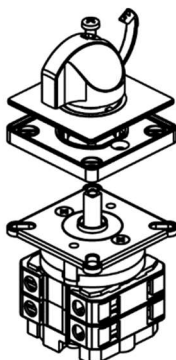
Maximum altitude: 2.000 m. Maximum humidity: 90%.

Pollution degree: 3 (standard for industrial applications).

Rated frequency at AC utilization categories: 50/60 Hz.

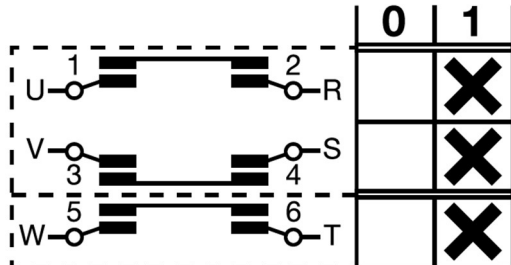
Rated duties at utilization categories AC21A, AC22A and AC23A: Continuing (8 hours); uninterrupted.

Diagram, connection & positions

You can find detailed information about our products at www.telergon.com

Cam switch
T-0004000012E1N1

TELERGON, SAU
Data subject to change without
notice (printed: 30/05/2023)

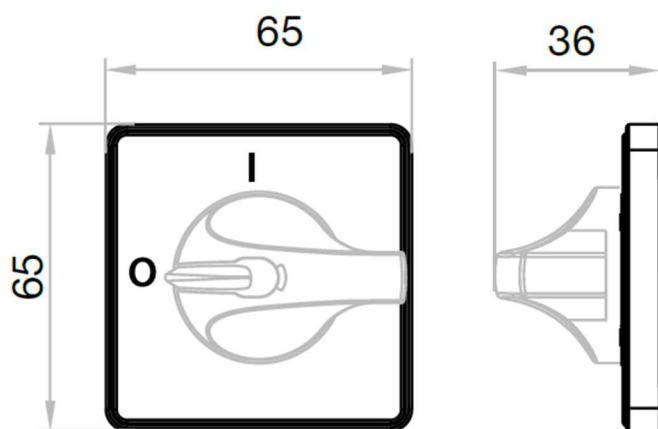


Scheme

Fixing

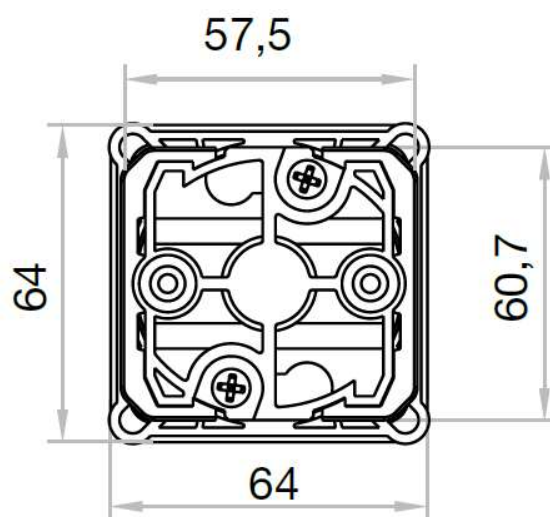
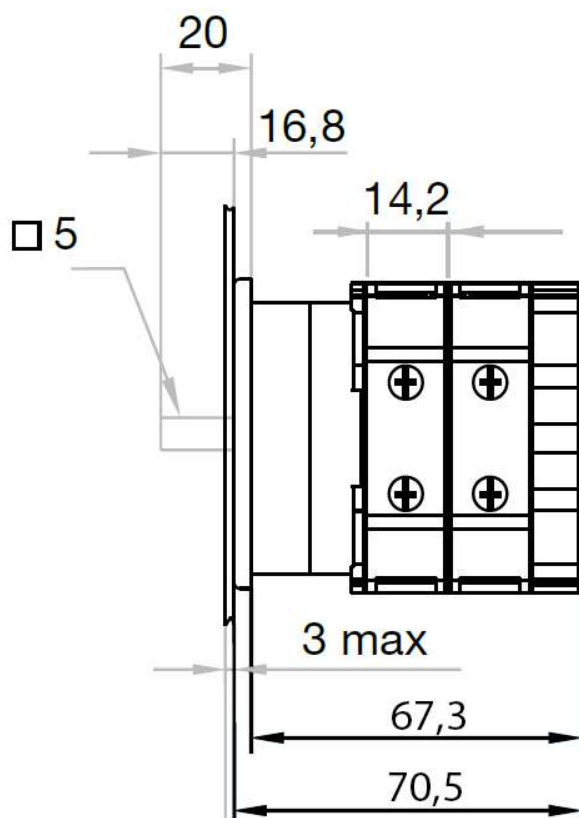
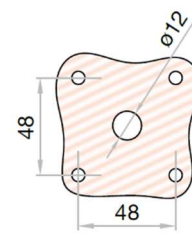
Positions

Dimensions



Frontal fixing
with 2 screws

Frontal fixing
with 4 screws



You can find detailed information about our products at www.telergon.com



Cam switch
T-0004000012E1N1

TELERGON, SAU
Data subject to change without
notice (printed: 30/05/2023)