



Representative picture

## Technical information

### According to IEC 60947-3

Rated thermal current (I <sub>th</sub> )	12 A
Rated insulation voltage (U <sub>i</sub> )	500 V
Rated impulse withstand voltage (U <sub>imp</sub> )	4 kV

### AC rated operational current

415 V	AC13A	10 A
415 V	AC21A	12 A
415 V	AC22A	12 A
415 V	AC23A	10 A

Rated conditional short-circuit current	5 kA
---	------

Rated maximum current (g <sub>L</sub> -g <sub>G</sub> )	16 A
---	------

Rated breaking capacity (400V; cos φ=0,45)	80 A
--	------

Rated short-time withstand current (1 sec)	100 A
--	-------

Mechanical durability (according to the standards, for other values please consult)

1000

Rigid copper conductor	2x4 mm <sup>2</sup>
------------------------	---------------------

Flexible copper conductor	2x2,5 mm <sup>2</sup>
---------------------------	-----------------------

## Standards



## Quality Telergon SAU

ISO 9001 &amp; 14001



### Normal service conditions:

Ambient air temperature (°C): -5°...+40°.

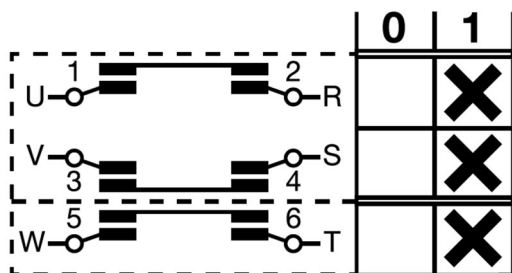
Maximum altitude: 2.000 m. Maximum humidity: 90%.

Pollution degree: 3 (standard for industrial applications).

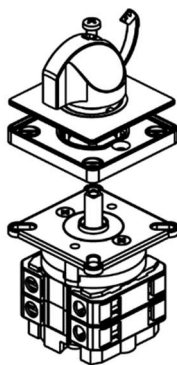
Rated frequency at AC utilization categories: 50/60 Hz.

Rated duties at utilization categories AC21A, AC22A and AC23A: Continuing (8 hours); uninterrupted.

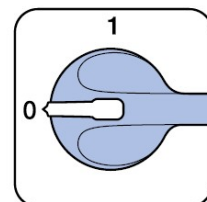
## Diagram, connection & positions



Scheme



Fixing



Positions

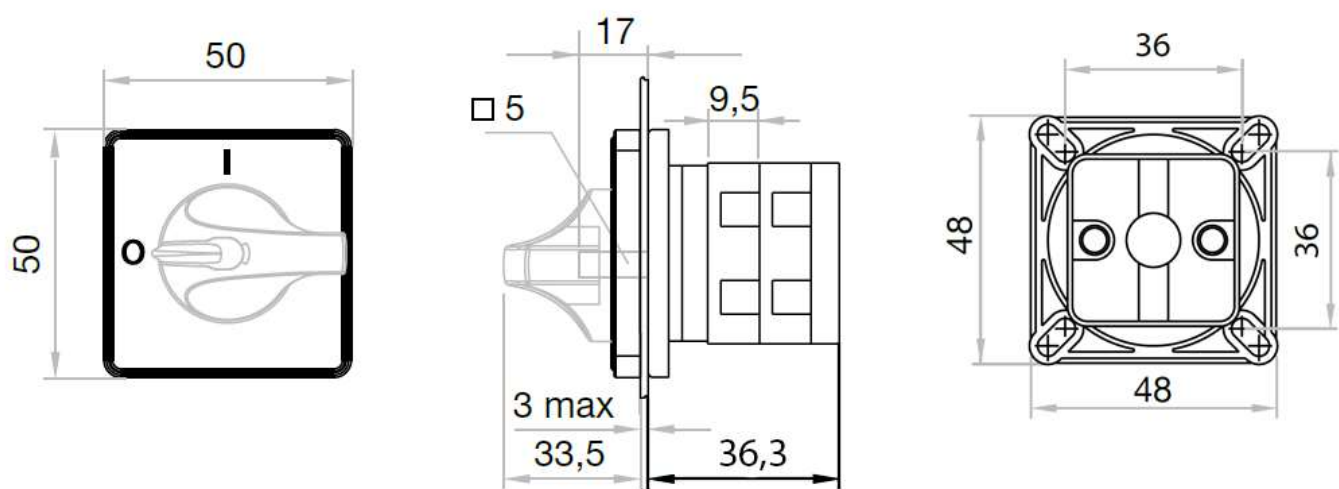
You can find detailed information about our products at [www.telergon.com](http://www.telergon.com)



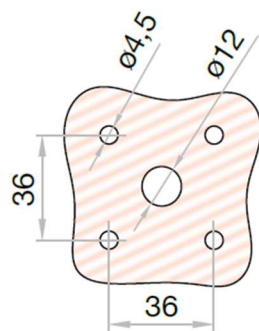
Cam switch  
TP-001000012E1N1

TELERGON, SAU  
Data subject to change without  
notice (printed: 30/05/2023)


Dimensions



Frontal fixing  
with 4 screws



You can find detailed information about our products at [www.telergon.com](http://www.telergon.com)

	<p>Cam switch TP-001000012E1N1</p>	<p>TELERGON, SAU Data subject to change without notice (printed: 30/05/2023)</p>
---	--	--