


描述:

- 电缆密封套外壳有塑制、黄铜、黄铜镀镍、不锈钢304/316L材料，Ex e 电缆密封套所有的入口（安装端）现场加工成公制螺纹，Ex d 电缆密封套入口螺纹加工成公制螺纹或 NPT 锥度英制管螺纹。防护等级 IP66/67。
- Ex e 空塞堵头用于 Ex e 箱闲置安装孔。
- 塑制零件添入适量MD粉末，长时承压下具备优良的冷流抗性。
- Ex d 空塞堵头用于 Ex d 箱体的安装孔，Ex d箱不容易钻孔，使用空塞堵头为未来安装扩充提供方便。
- 变径件用于改变已开孔设备的缩径、扩径。
- 呼吸、排流阀是为保证壳体内外部的压力均匀，可以有效防止湿气进入壳体，也可以防止壳体内水汽凝结。
- 护套的使用有效保护延长电缆密封套使用寿命。
- IECEx 国际认证、ATEX 欧盟认证

Descriptions:

- Cable glands can be manufactured in plastic, brass, nickel plated brass, stainless steel 304/316L. All entries(for installation) are produced to be metric thread for Ex e cable glands, either metric thread or NPT tapered thread for Ex d cable glands. Degree of protection is IP66/67.
- Ex e stopping plugs are used for blind unused entries in Ex e boxes.
- Plastic parts with appropriate MD powder have excellent cold flow resistance under long-term pressure.
- Exd stopping plugs are used for blind unused entries in Ex d boxes which are not easy to drill entries after production. With these Ex d stopping plugs, it will be convenient for future expansion.
- Reducers are used to have smaller size or bigger size for already drilled holes.
- Breather drains are used to keep the pressure same inside or outside the enclosure. They can effectively prevent any moisture within an enclosure or avoid any moisture condensation inside the enclosure.
- Shrouds can be used on cable glands to protect these cable glands for long life.
- IECEx International certification and ATEX European Approval.

1 区和 2 区

Zone 1 and zone 2

21 区和 22 区

Zone 21 and zone 22

主要数据 Main technical data:

认证 Certification	防爆标志 Ex mark	符合标准 Meet the standard
China: EETI18.0069X	Ex d II C Gb / Ex e II C Gb / Ex tD A21 IP66	GB3836 GB12476
IECEX: 认证中 Under approval	Ex db II C Gb / Ex eb II C Gb / Ex tb III C Db	IEC60079
ATEX: Sira18 ATEX1190X	⊕ II 2GD Ex db II C Gb / Ex eb II C Gb / Ex tb III C Db	EN60079

适用范围: 用于 1 区和 2 区, 20 区、21 区和 22 区

工作温度: -60℃ to +100℃

防护等级: IP66

材料: 黄铜 / 黄铜镀镍

304 / 316L 不锈钢

Intended use: Can be used in zone 1 and zone 2

Can be used in zone 20, zone 21 and zone 22

Operating temperature: -60℃ to +100℃

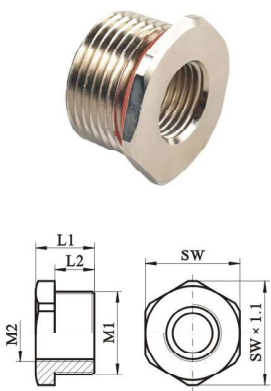
Degree of protection: IP66

Material: Brass / Nickel plated brass

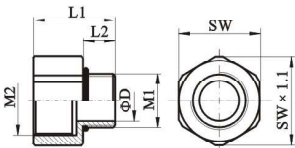
304/316L Stainless steel

B
订购规格 Order specifications:

ISO → ISO

图样 Illustration	螺纹 M1 Thread M1	螺纹 M2 Thread M2	L1 (mm)	L2 (mm)	SW (mm)	件/包 Pcs/package	订购号 Order No.
	M16×1.5	M12×1.5	19	15	20	10	CZ1725/4A-M16-M12 □□
	M20×1.5	M12×1.5	19	15	24	10	CZ1725/4A-M20-M12 □□
	M20×1.5	M16×1.5	19	15	24	10	CZ1725/4A-M20-M16 □□
	M25×1.5	M16×1.5	19	15	30	10	CZ1725/4A-M25-M16 □□
	M25×1.5	M20×1.5	19	15	30	10	CZ1725/4A-M25-M20 □□
	M32×1.5	M20×1.5	19.5	15	37	10	CZ1725/4A-M32-M20 □□
	M32×1.5	M25×1.5	19.5	15	37	10	CZ1725/4A-M32-M25 □□
	M40×1.5	M25×1.5	20	15	44	5	CZ1725/4A-M40-M25 □□
	M40×1.5	M32×1.5	20	15	44	5	CZ1725/4A-M40-M32 □□
	M50×1.5	M32×1.5	22	16	56	5	CZ1725/4A-M50-M32 □□
	M50×1.5	M40×1.5	22	16	56	5	CZ1725/4A-M50-M40 □□
	M63×1.5	M40×1.5	23.5	17	70	5	CZ1725/4A-M63-M40 □□
	M63×1.5	M50×1.5	23.5	17	70	5	CZ1725/4A-M63-M50 □□
	M75×1.5	M50×1.5	25	18	80	2	CZ1725/4A-M75-M50 □□
	M75×1.5	M63×1.5	25	18	80	2	CZ1725/4A-M75-M63 □□

螺纹 M1 Thread M1	螺纹 M2 Thread M2	ΦD (mm)	L1 (mm)	L2 (mm)	SW (mm)	件/包 Pcs/package	订购号 Order No.
M12×1.5	M16×1.5	6.5	34	15	20	10	CZ1725/4A-M12-M16 □□
M16×1.5	M20×1.5	10.5	34	15	24	10	CZ1725/4A-M16-M20 □□
M20×1.5	M25×1.5	15.5	34	15	30	10	CZ1725/4A-M20-M25 □□
M25×1.5	M25×1.5	20.3	35	15	30	10	CZ1725/4A-M25-M25 □□
M25×1.5	M32×1.5	20.3	35	15	37	10	CZ1725/4A-M25-M32 □□
M32×1.5	M40×1.5	27.3	35	15	44	5	CZ1725/4A-M32-M40 □□
M40×1.5	M50×1.5	35.3	36	15	56	5	CZ1725/4A-M40-M50 □□
M50×1.5	M63×1.5	45.2	38	16	70	5	CZ1725/4A-M50-M63 □□
M75×1.5	M90×2.0	69.3	46	18	95	2	CZ1725/4A-M75-M90 □□
M90×2.0	M100×2.0	83.2	50	22	110	2	CZ1725/4A-M90-M100 □□

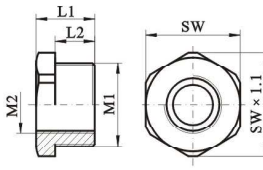
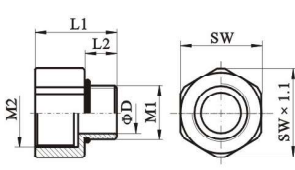


- 90 — 黄铜 Brass
- 91 — 黄铜镀镍 Nickel plated brass
- 40 — 304 不锈钢 304 Stainless steel
- 60 — 316L 不锈钢 316L Stainless steel

 材料
 Material

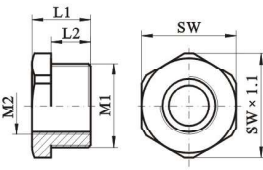
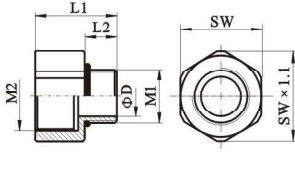
订购规格 Order specifications:

ISO → NPT

图样 Illustration	螺纹 M1 Thread M1	螺纹 M2 Thread M2	L1 (mm)	L2 (mm)	SW (mm)	件/包 Pcs/package	订购号 Order No.	
	M25×1.5	NPT1/2"	19	15	30	10	CZ1725/4A-M25-N012 □□	
	M32×1.5	NPT1/2"	19.5	15	37	10	CZ1725/4A-M32-N012 □□	
	M32×1.5	NPT3/4"	19.5	15	37	10	CZ1725/4A-M32-N034 □□	
	M40×1.5	NPT3/4"	21	15	44	5	CZ1725/4A-M40-N034 □□	
	M40×1.5	NPT1"	21	16	44	5	CZ1725/4A-M40-N100 □□	
	M50×1.5	NPT1"	22	16	56	5	CZ1725/4A-M50-N100 □□	
	M63×1.5	NPT1 1/2"	23.5	17	70	5	CZ1725/4A-M63-N112 □□	
	M75×1.5	NPT2"	25	18	80	2	CZ1725/4A-M75-N200 □□	
	螺纹 M1 Thread M1	螺纹 M2 Thread M2	ΦD (mm)	L1 (mm)	L2 (mm)	SW (mm)	件/包 Pcs/package	订购号 Order No.
	M16×1.5	NPT1/2"	10.5	35	15	24	10	CZ1725/4A-M16-N012 □□
	M20×1.5	NPT1/2"	15.5	35	15	24	10	CZ1725/4A-M20-N012 □□
	M20×1.5	NPT3/4"	15.5	35	15	30	10	CZ1725/4A-M20-N034 □□
	M25×1.5	NPT3/4"	20.3	35	15	30	10	CZ1725/4A-M25-N034 □□
	M25×1.5	NPT1"	20.3	39	15	37	10	CZ1725/4A-M25-N100 □□
	M32×1.5	NPT1"	27.3	39	15	37	10	CZ1725/4A-M32-N100 □□
	M40×1.5	NPT1 1/4"	35.3	39	15	48	5	CZ1725/4A-M40-N114 □□
	M40×1.5	NPT1 1/2"	35.3	39	15	56	5	CZ1725/4A-M40-N112 □□
	M50×1.5	NPT1 1/2"	41.7	40	16	56	5	CZ1725/4A-M50-N112 □□
	M50×1.5	NPT2"	45.2	40	16	70	5	CZ1725/4A-M50-N200 □□
	M63×1.5	NPT2"	53.6	41	17	70	5	CZ1725/4A-M63-N200 □□
	M75×1.5	NPT2 1/2"	64	50	18	80	2	CZ1725/4A-M75-N212 □□
	M75×1.5	NPT3"	69.3	52	18	95	2	CZ1725/4A-M75-N300 □□

B
订购规格 Order specifications:


NPT → ISO

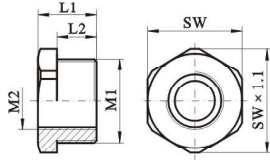
图样 Illustration	螺纹 M1 Thread M1	螺纹 M2 Thread M2	L1 (mm)	L2 (mm)	SW (mm)	件/包 Pcs/package	订购号 Order No.	
	NPT1/2"	M12×1.5	19	15	24	10	CZ1725/4A-N012-M12 □□	
	NPT3/4"	M16×1.5	20	16	30	10	CZ1725/4A-N034-M16 □□	
	NPT3/4"	M20×1.5	20	16	30	10	CZ1725/4A-N034-M20 □□	
	NPT1"	M20×1.5	24.5	20	37	10	CZ1725/4A-N100-M20 □□	
	NPT1"	M25×1.5	24.5	20	37	10	CZ1725/4A-N100-M25 □□	
	NPT1 1/4"	M25×1.5	25	20	48	5	CZ1725/4A-N114-M25 □□	
	NPT1 1/4"	M32×1.5	25	20	48	5	CZ1725/4A-N114-M32 □□	
	NPT1 1/2"	M32×1.5	26	20	56	5	CZ1725/4A-N112-M32 □□	
	NPT1 1/2"	M40×1.5	26	20	56	5	CZ1725/4A-N112-M40 □□	
	NPT2"	M50×1.5	26.5	20	70	5	CZ1725/4A-N200-M50 □□	
	NPT2 1/2"	M50×1.5	35	28	80	2	CZ1725/4A-N212-M50 □□	
	NPT2 1/2"	M63×1.5	35	28	80	2	CZ1725/4A-N212-M63 □□	
	NPT3"	M63×1.5	38	30	95	2	CZ1725/4A-N300-M63 □□	
	NPT3"	M75×1.5	38	30	95	2	CZ1725/4A-N300-M75 □□	
	螺纹 M1 Thread M1	螺纹 M2 Thread M2	ΦD (mm)	L1 (mm)	L2 (mm)	SW (mm)	件/包 Pcs/package	订购号 Order No.
	NPT1/2"	M20×1.5	15	36	16	24	10	CZ1725/4A-N012-M20 □□
	NPT1/2"	M25×1.5	15	36	16	30	10	CZ1725/4A-N012-M25 □□
	NPT3/4"	M25×1.5	20.1	36	16	30	10	CZ1725/4A-N034-M25 □□
	NPT1"	M32×1.5	26	40	20	37	10	CZ1725/4A-N100-M32 □□
	NPT1 1/2"	M50×1.5	40.8	41	20	56	5	CZ1725/4A-N112-M50 □□
NPT2"	M75×1.5	52.4	43	20	80	2	CZ1725/4A-N200-M75 □□	

NPT → ISO

订购规格 Order specifications:

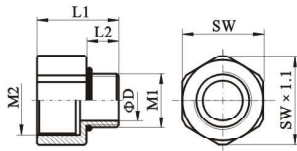
NPT → NPT

图样 Illustration	螺纹 M1 Thread M1	螺纹 M2 Thread M2	L1 (mm)	L2 (mm)	SW (mm)	件/包 Pcs/package	订购号 Order No.
	NPT3/4"	NPT1/2"	20	16	30	10	CZ1725/4A-N034-N012 □□
	NPT1"	NPT1/2"	24.5	20	37	10	CZ1725/4A-N100-N012 □□
	NPT1"	NPT3/4"	24.5	20	37	10	CZ1725/4A-N100-N034 □□
	NPT1 1/4"	NPT3/4"	25	20	48	5	CZ1725/4A-N114-N034 □□
	NPT1 1/4"	NPT1"	25	20	48	5	CZ1725/4A-N114-N100 □□
	NPT1 1/2"	NPT1"	26	20	56	5	CZ1725/4A-N112-N100 □□
	NPT1 1/2"	NPT1 1/4"	26	20	56	5	CZ1725/4A-N112-N114 □□
	NPT2"	NPT1 1/4"	26.5	20	70	5	CZ1725/4A-N200-N114 □□
	NPT2"	NPT1 1/2"	26.5	20	70	5	CZ1725/4A-N200-N112 □□
	NPT2"	NPT1"	26.5	20	70	5	CZ1725/4A-N200-N100 □□
NPT3"	NPT2"	38	30	95	2	CZ1725/4A-N300-N200 □□	
NPT3"	NPT2 1/2"	38	30	95	2	CZ1725/4A-N300-N212 □□	



NPT → NPT


螺纹 M1 Thread M1	螺纹 M2 Thread M2	ΦD (mm)	L1 (mm)	L2 (mm)	SW (mm)	件/包 Pcs/package	订购号 Order No.
NPT1/2"	NPT1/2"	15	36	16	24	10	CZ1725/4A-N012-N012 □□
NPT1/2"	NPT3/4"	15	36	16	30	10	CZ1725/4A-N012-N034 □□
NPT3/4"	NPT1"	20.1	40	16	37	10	CZ1725/4A-N034-N100 □□
NPT1"	NPT1 1/4"	26	44	20	48	5	CZ1725/4A-N100-N114 □□
NPT1 1/4"	NPT1 1/2"	34.8	44	20	56	5	CZ1725/4A-N114-N112 □□
NPT1 1/2"	NPT2"	40.8	44	20	70	5	CZ1725/4A-N112-N200 □□



- | | | |
|---------------|----------------------|----------------|
| 90 — 黄铜 | Brass | 材料
Material |
| 91 — 黄铜镀镍 | Nickel plated brass | |
| 40 — 304 不锈钢 | 304 Stainless steel | |
| 60 — 316L 不锈钢 | 316L Stainless steel | |


订购规格 Order specifications:

201 锁紧螺母 材料: 聚酰胺 Locknut Material: polyamide

图样 Illustration	M	SW	D	H	重量 Weight (kg)	件/包 Pcs/package	订购号 Order No.
	M16 × 1.5	22	Φ24	5	0.003	20	201/16
	M20 × 1.5	26	Φ29	6	0.004	20	201/20
	M25 × 1.5	32	Φ35	6	0.005	20	201/25
	M32 × 1.5	40	Φ44	7	0.005	20	201/32
	M40 × 1.5	50	Φ55	7	0.007	10	201/40
	M50 × 1.5	60	Φ66	7	0.010	10	201/50
	M63 × 1.5	75	Φ83	9	0.016	5	201/63


B

203 锁紧螺母 材料: 铜制 Locknut Material: brass

图样 Illustration	M	SW	H	重量 Weight (kg)	件/包 Pcs/package	订购号 Order No.
	M16 × 1.5	20	5	0.004	20	203/16-□□
	M20 × 1.5	24	5	0.005	20	203/20-□□
	M25 × 1.5	30	5	0.009	20	203/25-□□
	M32 × 1.5	37	5	0.010	20	203/32-□□
	M40 × 1.5	44	5	0.018	10	203/40-□□
	M50 × 1.5	56	6	0.027	10	203/50-□□
	M63 × 1.5	70	6	0.056	5	203/63-□□
	M75 × 1.5	80	10	0.120	5	203/75-□□
	M80 × 1.5	86	10	0.132	5	203/80-□□
	M90 × 2.0	95	10	0.172	5	203/90-□□
	M100 × 2.0	106	12	0.210	5	203/100-□□

90 — 黄铜	Brass	}	材料 Material
91 — 黄铜镀镍	Nickel plated brass		
40 — 304 不锈钢	304 Stainless steel		
60 — 316L 不锈钢	316L Stainless steel		

200 密封垫圈 材料: 橡胶 Seal Material: rubber

图样 Illustration	规格 Specification	Φ	D	H	重量 Weight (kg)	件/包 Pcs/package	订购号 Order No.
	M16 × 1.5	15.5	22	1.2	0.0004	100	200/16
	M20 × 1.5	19.5	27	1.2	0.0005	100	200/20
	M25 × 1.5	24	34	1.5	0.0006	100	200/25
	M32 × 1.5	31	42	1.5	0.0018	100	200/32
	M40 × 1.5	39	52	1.5	0.0012	20	200/40
	M50 × 1.5	49	62	1.5	0.0014	20	200/50
	M63 × 1.5	62	77	2	0.0024	20	200/63
	M75 × 1.5	74	90	2	0.0032	10	200/75
	M80 × 2	79	102	2	0.0055	10	200/80
	M90 × 2	89	106	2	0.0060	10	200/90
M100 × 2	99	116	2	0.0068	10	200/100	

外形尺寸 Outline dimensions:

