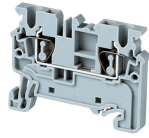


CX2.5



connectwell
THE RIGHT CONNECTION

2.5 sq.mm Spring Clamp Feed Through compact Terminal Blocks

The Spring Clamp is operated by using a screw driver to provide an access to the wire through an opening in the spring clamp. The inserted wire gets clamped on to the current bar when the screw driver is removed.

THIS PRODUCT IS NOT FOR SALE IN GERMANY

TECHNICAL DATA

| | |
|------------------------|-----------------------|
| Rated Voltage | 1000 V |
| Rated Current | 24 A |
| Housing Material | Polymide |
| Product Function | Feed Through |
| Wire Entry Orientation | Top |
| Mounting Possibility | DIN 35/DIN 35-15 Rail |
| Operated by | Screw Driver |
| Rated Surge Voltage | 8 KV |
| Pollution Degree | 3 |

CONNECTION DATA

| | |
|---|---------------------|
| Conductor Cross Section Stranded min. | 0.2 mm ² |
| Conductor Cross Section Stranded max. | 2.5 mm ² |
| Conductor Cross Section AWG/Kcmil min | 24 AWG |
| Conductor Cross Section AWG/Kcmil max | 12 AWG |
| Conductor Cross Section Stranded with Ferrule/Lug min | 0.2 mm ² |
| Conductor Cross Section Stranded with Ferrule/Lug max | 2.5 mm ² |
| Conductor Cross Section Solid min | 0.2 mm ² |
| Conductor Cross Section Solid max | 4 mm ² |
| 2 Conductors with same Cross Section Stranded with TWIN Ferrule/Lug min | 0.2 mm ² |
| 2 Conductor with same Cross Section Stranded with TWIN Ferrule/Lug max | 1.0 mm ² |
| Stripping Length | 10 mm |

DIMENSIONS

| | |
|----------------------------------|---------|
| Height with DIN 35 x 15 mm rail | 45.7 mm |
| Height with DIN 35 x 7.5 mm rail | 38 mm |
| Length | 50 mm |
| Width (Thickness) | 5 mm |

ORDERING INFORMATION

| CAT. NO. | DESCRIPTION | STD. PACK |
|----------|---|-----------|
| CX2.5 | 2.5 sq.mm Feed Through Spring Clamp Terminal Block in Grey colour | 100 |
| CX2.5BU | 2.5 sq.mm Feed Through Spring Clamp Terminal Block in Blue colour | 100 |

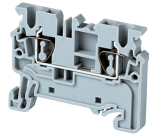
ORDERING INFORMATION

| CAT. NO. | DESCRIPTION | STD. PACK |
|----------|---|-----------|
| CX2.5BK | 2.5 sq.mm Feed Through Spring Clamp Terminal Block in Black colour | 100 |
| CX2.5GN | 2.5 sq.mm Feed Through Spring Clamp Terminal Block in Green colour | 100 |
| CX2.5R | 2.5 sq.mm Feed Through Spring Clamp Terminal Block in Red colour | 100 |
| CX2.5Y | 2.5 sq.mm Feed Through Spring Clamp Terminal Block in Yellow colour | 100 |
| CX2.5O | 2.5 sq.mm Feed Through Spring Clamp Terminal Block in Orange colour | 100 |

ACCESSORIES

| IMAGES | CAT. NO. | DESCRIPTION | STD. PACK |
|--------|---------------|--|-----------|
| | CA701-1M | Din 35 Rail unslotted 1 meter | 50 |
| | CA701-2M | Din 35 Rail unslotted 2 meter | 50 |
| | CA701-2M-S | Din 35 Rail slotted 2 meter | 50 |
| | CA701-1M-S | Din 35 Rail slotted 1 meter | 50 |
| | CA701-15-1M | Din 35 Rail 15 deep unslotted 1 meter | 50 |
| | CA701-15-1M-S | Din 35 Rail 15 deep slotted 1 meter | 50 |
| | CA701-15-2M | Din 35 Rail 15 deep unslotted 2 meter | 50 |
| | CA701-15-2M-S | Din 35 Rail 15 deep slotted 2 meter | 50 |
| | CA103 | EndClamp in Polyamide suitable for Din 35/Din 35-15 rails | 50 |
| | CA702 | End Clamp in Polyamide 66 suitable for Din 32 / Din 35 / Din 35-15 Rails | 50 |
| | CA802 | End Clamp in Polyamide suitable for Din 35 / Din 35-15 Rails | 50 |
| | EPCX2.5 | End Plate in Grey Colour | 50 |
| | EPCX2.5BU | End Plate in Blue Colour | 50 |

CX2.5



connectwell
THE RIGHT CONNECTION

ACCESSORIES

| IMAGES | CAT. NO. | DESCRIPTION | STD. PACK |
|--------|----------|--|-----------|
| | JX2.5/2 | Shorting Link for 2.5 sq mm series | 100 |
| | JX2.5/3 | Shorting Link for 2.5 sq mm series | 50 |
| | JX2.5/4 | Shorting Link for 2.5 sq mm series | 50 |
| | JX2.5/5 | Shorting Link for 2.5 sq mm series | 50 |
| | JX2.5/6 | Shorting Link for 2.5 sq mm series | 50 |
| | JX2.5/7 | Shorting Link for 2.5 sq mm series | 10 |
| | JX2.5/8 | Shorting Link for 2.5 sq mm series | 10 |
| | JX2.5/10 | Shorting Link for 2.5 sq mm series | 10 |
| | CA509/K5 | Blank Marking Tag | 100 |
| | WLX2.5 | Warning label suitable for 5mm wide terminal block | 50 |
| | SCS0.5/3 | Electricians Screwdriver for slotted screws | 10 |

APPROVALS



NOTES

THIS PRODUCT IS NOT FOR SALE IN GERMANY

RATINGS AS PER STANDARDS

| STANDARDS | UL 1059 | CSA C.22.2 No:158 | IEC/EN60947-7-1 |
|---------------------------------------|---------|-------------------|---------------------|
| Approvals | UL | CSA | CE |
| Conductor Cross Section Stranded min. | 24 AWG | 24 AWG | 0.2 mm ² |
| Conductor Cross Section Stranded max. | 12 AWG | 12 AWG | 2.5 mm ² |
| Rated Voltage | 600 V | 600 V | 1000 V |
| Rated Current | 20 A | 20 A | 24 A |