

Sirene elettroniche

Electronic sirens

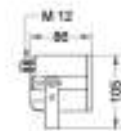
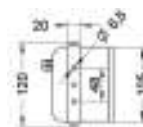
V $\overline{\text{---}}$ 12÷24	V \sim -48 \sim -110 \sim -240 \sim ($\pm 10\%$)	$\overline{\text{---}}$	\sim 50/60 Hz	On ∞
autoestinguente self-extinguishing	IP 43			
				°C -30 +50



SE 12/35 MS 32
SE1235MS32

(12) (21) (29)

V $\overline{\text{---}}$	12÷24	
V \sim		
mA	400	650
dB(A)1m	Min 102 - Max 114	IP 43
SE1235MS321224DA	50424	



Kg. 0,70



SE 12/36 MS 32
SE1236MS32

(12) (21) (29)

V $\overline{\text{---}}$	-	-	-
V \sim	48	110	240
mA	200	90	60
dB(A)1m	Min 108 - Max 113		IP 43
SE1236MS3248A			50425
SE1236MS32110A			50426
SE1236MS32240A			50427



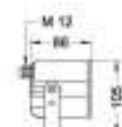
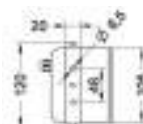
Kg. 1,00



SE PZ/35 MS 32
SEPZ35MS32

(12) (21) (29)

V $\overline{\text{---}}$	12÷24	
V \sim		
mA	530	240
dB(A)1m	Min 98 - Max 106	IP 43
SEPZ35MS321224DA	50428	



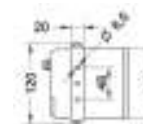
Kg. 0,40



SE PZ/36 MS 32
SEPZ36MS32

(12) (21) (29)

V $\overline{\text{---}}$	-	-	-
V \sim	48	110	240
mA	80	35	15
dB(A)1m	Min 99 - Max 104		IP 43
SEPZ36MS3248A			50429
SEPZ36MS32110A			50430
SEPZ36MS32240A			50431



Kg. 0,70