

# CAIXAS DE DERIVAÇÃO

## Modelo Americano - Fornecidas com tampa e rosca BSP.

C



56101/



REF.	R\$ un.	EMB. un.	EAN 13	BITOLA
789.1435.				

### Modelo "C"

REF.	R\$ un.	EMB. un.	EAN 13	BITOLA
56101/051		12	00421 2	½"
56101/052		12	00422 9	¾"
56101/053		12	00423 6	1"
56101/054		6	02935 2	1.¼"
56101/055		6	02936 9	1.½"
56101/056		4	02937 6	2"

LB



56103/



REF.	R\$ un.	EMB. un.	EAN 13	BITOLA
789.1435.				

### Modelo "LB"

REF.	R\$ un.	EMB. un.	EAN 13	BITOLA
56103/051		12	00424 3	½"
56103/052		12	00425 0	¾"
56103/053		12	00426 7	1"
56103/054		6	02938 3	1.¼"
56103/055		6	02939 0	1.½"
56103/056		4	02940 6	2"

LL



56104/



REF.	R\$ un.	EMB. un.	EAN 13	BITOLA
789.1435.				

### Modelo "LL"

REF.	R\$ un.	EMB. un.	EAN 13	BITOLA
56104/051		12	00427 0	½"
56104/052		12	00428 1	¾"
56104/053		12	00429 8	1"
56104/054		6	02941 3	1.¼"
56104/055		6	02942 0	1.½"
56104/056		4	02943 7	2"

LR



56105/



REF.	R\$ un.	EMB. un.	EAN 13	BITOLA
789.1435.				

### Modelo "LR"

REF.	R\$ un.	EMB. un.	EAN 13	BITOLA
56105/051		12	00433 5	½"
56105/052		12	00434 2	¾"
56105/053		12	00435 9	1"
56105/054		6	02944 4	1.¼"
56105/055		6	02945 1	1.½"
56105/056		4	02946 8	2"

T



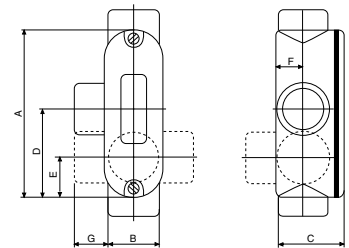
56106/



REF.	R\$ un.	EMB. un.	EAN 13	BITOLA
789.1435.				

### Modelo "T"

REF.	R\$ un.	EMB. un.	EAN 13	BITOLA
56106/051		12	00430 4	½"
56106/052		12	00431 1	¾"
56106/053		12	00432 8	1"
56106/054		6	02947 5	1.¼"
56106/055		6	02948 2	1.½"
56106/056		4	02949 9	2"



BITOLA	MODELO AMERICANO						
	DIMENSÕES [mm]						
	A	B	C	D	E	F	G
½"	97,5	34	40	48,75	22	16	18
¾"	118	38,5	46,5	59	26	18	19
1"	136,5	44	53,5	68,25	27,5	22,5	19
1.¼"	166	53	71	83	42,5	27,5	24,5
1.½"	184	61	78	92	44,5	31	27
2"	244	73	94	122	56	37,5	28,5