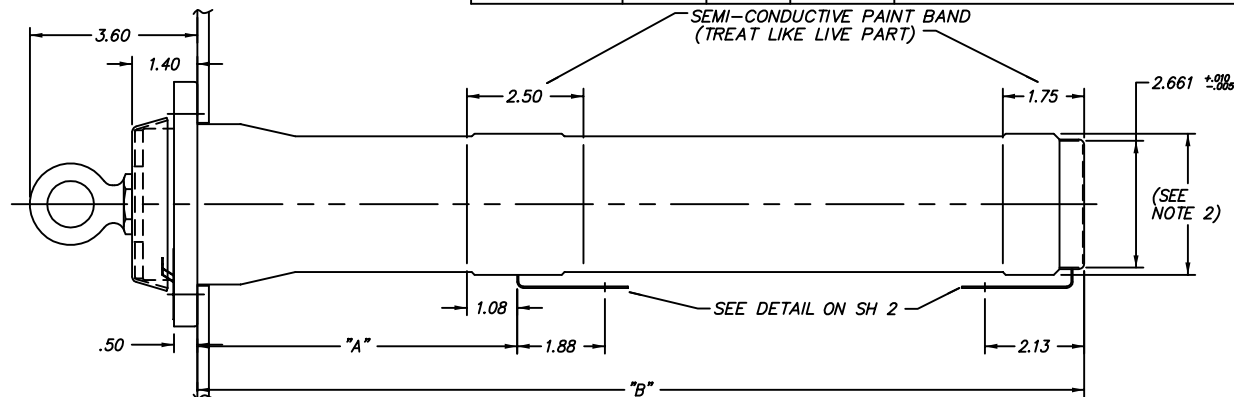
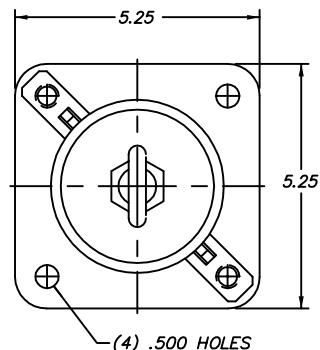


UNLESS OTHERWISE SPECIFIED, TOLERANCES ARE

SURFACES	2 PL DEC	3 PL DEC	ANGLES
✓	±	±	± DEG

OUTLINE - DRY WELL FUSEHOLDER

FIRST MADE FOR NON-LOADBREAK METAL FLANGE



NOTES:

- FOR THOSE APPLICATIONS WHERE AN INTERLOCKED LOADBREAK SWITCH IS NOT USED IN CONJUNCTION WITH THE NON-LOADBREAK FUSEHOLDER, A WARNING BAFFLE SHOULD BE USED AS A PRECAUTION AGAINST ENERGIZED OPERATION OF THE FUSEHOLDER. THE OPTIONAL WARNING BAFFLE ASSEMBLY SHOWN BELOW IS AVAILABLE FROM ERMCO COMPONENTS INC. (7559ZC2099).
- MUST PASS THRU 3.50 DIA HOLE.

ENGINEERING DATA

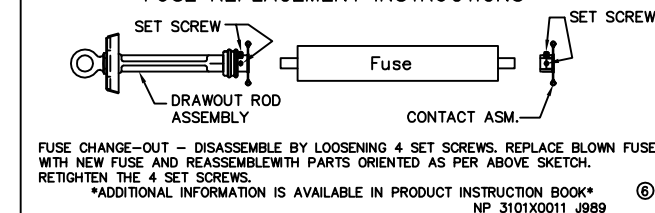
FUSEHOLDER CAP	CATALOG NUMBER		
PLATED STEEL	7559ZC8399	7559ZC8499	7559ZC8599
STAINLESS STEEL	7559ZG8399	7559ZG8499	7559ZG8599
"A"	6.68	6.68	5.58
"B"	22.84	20.04	14.44
MAX VOLTAGE RATING	21.1KV	15.2KV	8.3KV
BIL	125KV	125KV	95KV
HIPOT	50KV	40KV	34KV
CORONA EXTINCTION	26KV	19KV	11KV
CONTINUOUS CURRENT RATING (UNFUSED)	160A	160A	160A
MOMENTARY CURRENT RATING (UNFUSED)	10,000 A RMS SYM (10 CYCLES)	10,000 A RMS SYM (10 CYCLES)	10,000 A RMS SYM (10 CYCLES)
ACCEPTABLE FUSES (GE SUREGUARD GP OR MCGRAW NX) (MUST BE ORDERED SEPERATELY)	23KV - ALL SIZES THRU 25A	15.5KV - ALL SIZES THRU 40A	2.8 & 4.3KV - ALL SIZES THRU 100A 5.5KV - ALL SIZES THRU 75A 8.3KV - ALL SIZES THRU 40A

REPLACEMENT PARTS

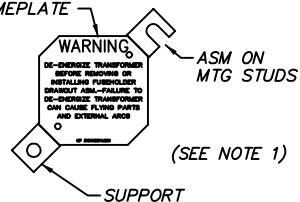
CATALOG NO.	CONTACT ASM	DRAWOUT ROD
7559ZC8399	7559ZB3999	7559ZC1199
7559ZG8399	7559ZB3999	7559ZE4299
7559ZC8499	7559ZB3999	7559ZC1199
7559ZG8499	7559ZB3999	7559ZE4299
7559ZC8599	7559ZB3999	7559ZC1299
7559ZG8599	7559ZB3999	7559ZC2699

DECAL

FUSE REPLACEMENT INSTRUCTIONS



NAMEPLATE



REVISONS	DATE	DESCRIPTION	APPROVALS	ECI	PRINTS TO
0	JUL-28-1987				
1	G.DAVIS MAR.08.1988				
		RETRACED ADDED NEW CAT NO'S			
2	G.DAVIS JULY 30.1991				
		CHG "A" DIM 6.68 WAS 6.88			
3	L MCLEAN 12/15/93				
		CHG TERM LGTH			
4	D.KANUPP 3/9/94				
		ADD 2.661 DIM.			
5	STULPIN 04-FEB-99				
		UPDATED TEMPLATE			
6	STULPIN 07-MAY-99				
		CHG C2899 IN CHART TO E4299			
7	GILLAND 11-NOV-02				
		REMOVE ALL SET TO BE REPLACED WITH ERMCO			
8	GILLAND 26-SEPT-02				
		UPDATED TEMPLATE			
9	N. Adams 12/05/05				
		CON. B220 Instructions Redrawn			
MADE BY G.DAVIS JUL.08.1987 ISSUED BY Nicholas Adams 12/05/05					APPROVALS ECI B2571K229 CONT ON SH 2 SH 1



TITLE

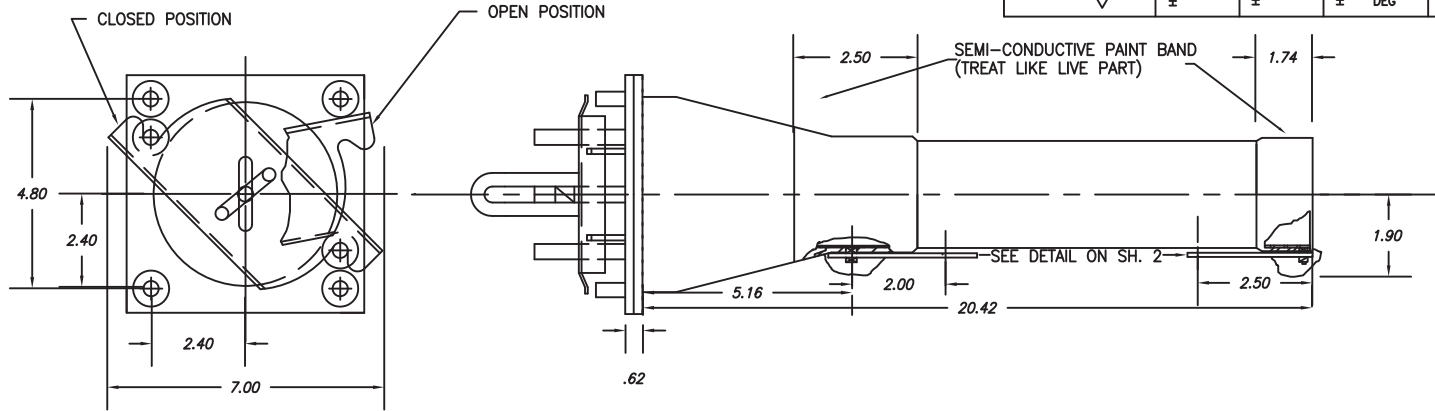
B2571K189
CONT ON SH 2 SH 1

UNLESS OTHERWISE SPECIFIED, TOLERANCES ARE

SURFACES	2 PL DEC	3 PL DEC	ANGLES
✓	±	±	± DEG

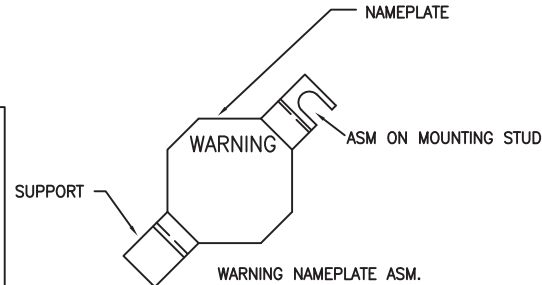
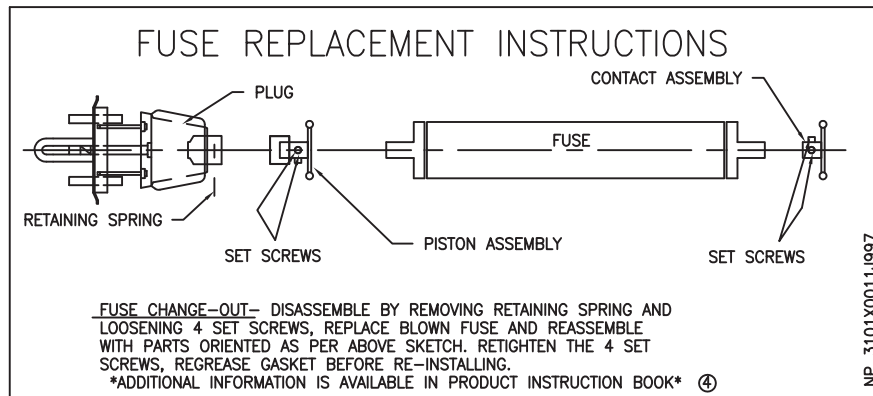
FIRST MADE FOR

OUTLINE (DRY WELL FUSEHOLDER-DIELECTRIC PLUG)

CATALOG NO. 7559ZC2599
ASSEMBLY DWG NO. B2571K187G02

ENGINEERING DATA

MAX VOLTAGE RATING	21.1 KV (LN/GND)
MAX VOLTAGE RATING	36.6 KV (LN/LN)
BIL	150 KV
HIPOT	50 KV
CORONA EXTINCTION	26 KV
CONTINUOUS CURRENT RATING (UNFUSED)	160A
MOMENTARY CURRENT RATING (UNFUSED)	10,000 A RMS SYM(10 CYCLES)
ACCEPTABLE FUSE (G.E. SUREGUARD GP OR McGRAWNX) (MUST BE ORDERED SEPARATELY)	23 KV ALL SIZES THRU 25A



REPLACEMENT PARTS	CAT NO.
PLUG & CHANNEL ASM. (W/GASKET)	7559ZB5399
GASKET ONLY	7559ZB5499
PISTON ASM (W/ SPIRAL & RETAINING SPRINGS)	7559ZB5699
CONTACT ASM	7539ZB3999

FIGURE 02

- NOTE:
1. MOUNTING HOLE $\phi 4.60$.
 2. FOR THOSE APPLICATIONS WHERE AN INTERLOCK LOADBREAK SWITCH IS NOT USED IN CONJUNCTION WITH THE NON-LOADBREAK FUSEHOLDER, A WARNING BAFFLE SHOULD BE USED AS A PRECAUTION AGAINST ENERGISED OPERATION OF THE FUSEHOLDER. THE OPTIONAL WARNING BAFFLE SHOWN AT RIGHT IS AVAILABLE FROM GENERAL ELECTRIC COMPANY (7559ZC2199)
 3. SILICON GREASE SHOULD BE APPLIED TO THE DRAWROD ASSEMBLY GASKET BEFORE INSTALLING IN DRYWELL TUBE.

REVISIONS	DATE	DESCRIPTION	APPROVALS	ERMCO-BTL
1	S.A. WILSON 23 OCT 95	CHANGED MAX VOLTAGE RATING AS PER ECN # F54		
2	STULPIN 04-FEB-99	UPDATED TEMPLATE		
3	GILLAND 07-OCT-02	UPDATED TEMPLATE		
4	GILLAND 28-OCT-02	UPDATED TEMPLATE		
5	Crumley 6/17/04	Correct Assembly NO. ECN # B142		
6	N. Adams 3/18/09	Add note 3. Chg sh. 2 & 3 to sh. 1 & 2 ECN # B465		

MADE BY: B.FRYE 3/9/78

ISSUED BY: Nicholas Adams 3/18/09

APPROVALS

ERMCO

B2571K189
CONT ON SH 2 SH 1

C-12A

03/09

