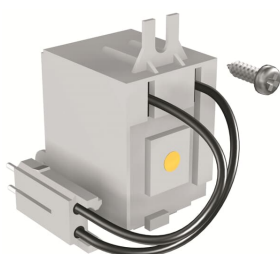


PRODUCT-DETAILS

# SOR-C A1-A2 220-240Vac-220-250Vdc

## SOR-C A1-A2 220-240Vac-220-250Vdc



### General Information

|                       |   |
|-----------------------|---|
| Extended Product Type | SOR-C A1-A2 220-240Vac-220-250Vdc                             |
| Product ID            | 1SDA066137R1  |
| EAN                   | 8015644691325   |
| Catalog Description   | SOR-C A1-A2 220-240Vac-220-250Vdc                             |
| Long Description      | SHUNT OPENING RELEASE WIRED 220...240V AC-220...250V DC A1-A2 |

### Ordering

|                          |               |
|--------------------------|---------------|
| EAN                      | 8015644691325 |
| Minimum Order Quantity   | 1 piece       |
| Customs Tariff Number    | 85389099      |
| Order Code US and Canada | KA2S2         |

### Dimensions

|                    |          |
|--------------------|----------|
| Product Net Weight | 0.109 kg |
|--------------------|----------|

### Container Information

|                              |          |
|------------------------------|----------|
| Package Level 1 Units        | 1 piece  |
| Package Level 1 Gross Weight | 0.115 kg |

Package Level 1 EAN

8015644691325

### Environmental

RoHS Status Following EU Directive 2011/65/EU and Amendment 2015/863 July 22, 2019

### Additional Information

|                                 |                                      |
|---------------------------------|--------------------------------------|
| Configuration Type              | Loose or configurable                |
| Current Type                    | AC/DC                                |
| Product Main Type               | Accessories for FORMULA              |
| Product Name                    | Accessory                            |
| Product Type                    | ACC                                  |
| Rated Voltage (U <sub>r</sub> ) | 220 ... 240 V AC<br>220 ... 250 V DC |
| Standards                       | IEC                                  |
| Suitable For                    | A1, A2                               |

### Certificates and Declarations (Document Number)

|                                   |                                    |
|-----------------------------------|------------------------------------|
| Data Sheet, Technical Information | 9AKK105713A5945                    |
| Declaration of Conformity - CE    | 9AKK106713A5519<br>9AKK106713A5518 |
| Instructions and Manuals          | 1SDC210032D0204                    |
| REACH Declaration                 | 9AKK108466A1425                    |
| RoHS Information                  | 9AKK108466A1424                    |

### Classifications

|                            |  |
|----------------------------|--|
| ETIM 6                     | EC002483 - Switch spool for power circuit breaker          |
| ETIM 7                     | EC002483 - Switch spool for power circuit breaker          |
| ETIM 8                     | EC002483 - Switch spool for power circuit breaker          |
| Object Classification Code | Q  |
| WEEE Category              | 5. Small Equipment (No External Dimension More Than 50 cm) |

### Categories

Low Voltage Products and Systems → Circuit Breakers → Moulded Case Circuit Breakers → Accessories for Formula DSA

