

1P

Arktite® Heavy Duty Circuit Breaking Plugs and Receptacles

NEMA 4 Watertight

**Industrial Heavy Duty
Non-Hazardous Areas****Application:**

Arktite circuit breaking plugs and receptacles are used:

- to supply power to portable electrically operated devices such as motor-generator sets, compressors, heating and cooling units, welders, conveyors, lighting systems and similar equipment
- where temporary power is needed, such as at trailers, building units, heavy machinery and similar equipment
- wherever electrical loads must be quickly disconnected from power source
- in a typical installation, where a large machine utilizes a number of electrical motor drives and for ease of adjustment, removal, maintenance and replacement, each motor is connected by portable cord and Arktite receptacles rather than permanently wired
- in areas where dust, dirt, moisture and corrosion are a problem
- indoors and outdoors in non-hazardous areas of chemical plants, process industry facilities, meat packing plants, manufacturing plants and similar industrial locations

Features:

- Circuit breaking: Plugs through 200 ampere rating may be disconnected under load; 400 ampere units are for service disconnect use only.
- Receptacles accept only plugs of the same amperage rating, style and number of poles, making it impossible to mismatch, and provides for positive polarization.
- Extra wide electrical spacing allows for maximum safety.
- Insulator materials are the result of intensive testing. Selection has been made based on highest dielectric strength, maximum mechanical and impact resistance, lowest moisture absorption and highest arc tracking resistance.
- A variety of installations is possible due to the availability of several types of back boxes.
- Designed to withstand rough usage and the effects of adverse environments.
- Reversible interiors, 30, 60 and 100 ampere (except 30 and 60 ampere, 5-pole) Arktite plug and receptacle interiors are interchangeable using a screwdriver. This makes it possible to feed a normally deenergized receptacle from an energized plug with usual Arktite safety; no energized contacts are exposed.
- Additional features are indicated in the view at right:
 - 1 Grounding contact in Style 2 is bonded to the receptacle housing.
 - 2 Easily wired interior assemblies in receptacles and plugs. See table on page 938 for type of contacts in units.
 - 3 Arktite Style 2, illustrated here, has an extra grounding contact which forms a parallel circuit with the circuit formed by the plug sleeve and receptacle detent spring, and assures continuity of the grounding

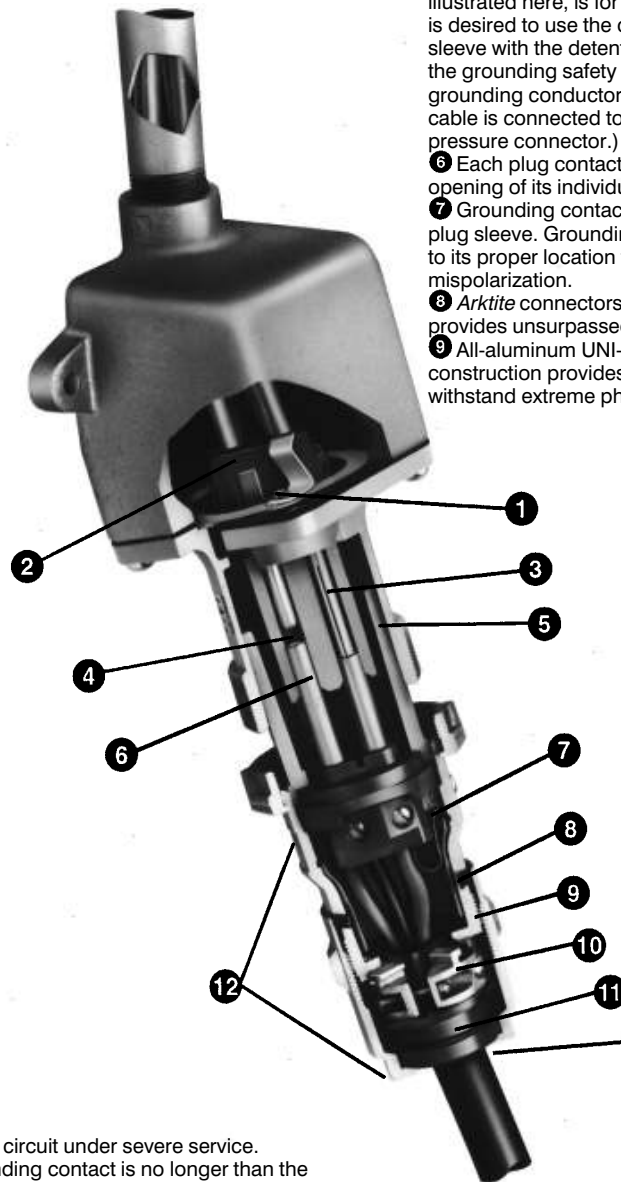
safety circuit under severe service. Grounding contact is no longer than the others, so grounding circuit is made first and broken last.

4 The arc formed by pulling the plug is instantly snuffed in the deep, confined insulated arcing chamber while the plug contact is still a considerable distance inside. The arc cannot travel over to the other side of the circuit or to the housing.

5 Detent spring forms a grounding path from plug sleeve to receptacle housing. Arktite plugs and receptacles are made in two styles. With either style, the portable appliance is grounded before it is energized and remains grounded until after it is deenergized. (Arktite Style 1, not

illustrated here, is for conditions where it is desired to use the contact of the plug sleeve with the detent spring to complete the grounding safety circuit. The extra grounding conductor in the portable cable is connected to the plug sleeve by a pressure connector.)

- 6 Each plug contact fits closely the opening of its individual arcing chamber.
- 7 Grounding contact is bonded to the plug sleeve. Grounding contact is keyed to its proper location to prevent mispolarization.
- 8 Arktite connectors' gasketing system provides unsurpassed watertight integrity.
- 9 All-aluminum UNI-SHELL™ threaded construction provides added strength to withstand extreme physical abuse.

**NEW!
NEMA 4
Rating****Arktite Style 2
60 ampere****NEW!
Smaller
Cable
Range**

10 Arktite's TRI-LOCK™ cable grip has three clamps that tighten around the cable to securely lock it in place, even when subjected to extreme flexing and jerking.

11 The unique SURE-SEAL™ cable gland provides a complete environmental seal by distributing pressure equally around the circumference of the cable.

12 Wrenching surfaces make Arktite connector quick and easy to assemble.

Arktite® Heavy Duty Circuit Breaking Plugs and Receptacles

Industrial Heavy Duty Non-Hazardous Areas

NEMA 4 Watertight

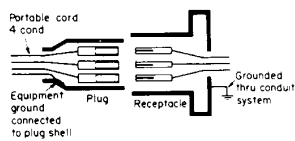
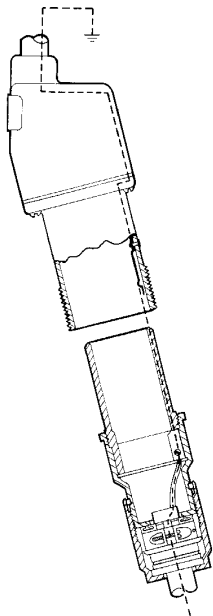
1P

Grounding: Style 1 vs. Style 2

Cooper Crouse-Hinds Arktite devices utilize two methods, or styles, for completing the grounding circuit in plugs and receptacles. NEC reference 250.138 (A) & (B).

Style 1 – Metallic

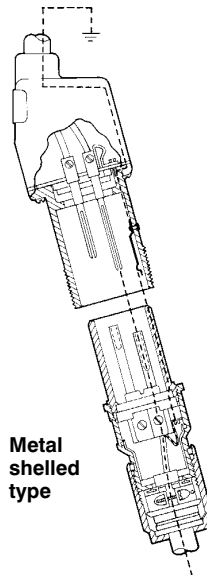
A Style 1 plug is one in which the grounding conductor in the flexible cable is bonded to the plug sleeve by a pressure connector. A Style 1 receptacle is one which is grounded by virtue of the fact that it is an integral part of a grounded conduit system. On insertion, the plug sleeve makes contact with detent springs of the grounded receptacle housing before line and load poles engage, and on withdrawal, remains in contact until after line and load poles disengage. Therefore, exposed metal parts of the portable equipment or plug are suitably grounded.



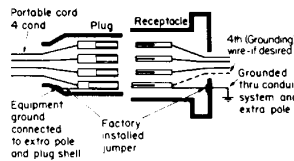
Style 1
Ground conductor attaches to shell.

STYLE 2 – Metallic

A Style 2 metallic housing plug is one in which the grounding conductor in the flexible cable is bonded to the extra (grounding) pole and metal plug sleeve by a pressure connector. A Style 2 metallic housing receptacle is one in which the extra (grounding) pole is electrically connected to the equipment grounding conductor and the metal receptacle housing which itself is grounded by virtue of the fact that it is an integral part of a grounded conduit system. In Style 2, non-metallic housing plugs and receptacles, the extra pole is used for grounding since the housings are non-conductive.



Metal shelled type

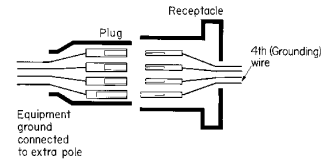
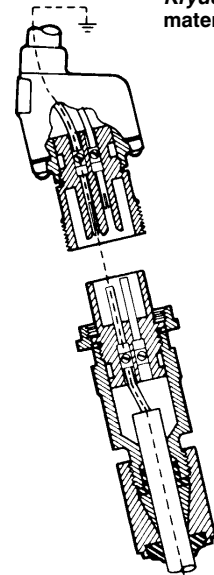


Style 2
Ground conductor attaches to contact, which is bonded to shell.

Style 2 – Non-Metallic

In a Style 2 receptacle, the grounding connection is made before line and load poles engage, and is broken after the line load poles disengage. Furthermore, upon insertion, the plug sleeve of metal shelled units, makes contact with detent springs of the grounded receptacle housing before line and load poles engage, and on withdrawal, remains in contact until after line and load poles disengage. Therefore, exposed metal parts of the portable equipment or plug are suitably grounded.

Made of non-metallic Krydon material



Options:

• The following special options are available from factory by adding suffix to Cat. No.:

Suffix to be

Added to

Cat. # Description

S22. . . . Reversed contacts. Receptacle assembled with plug interior (exposed contacts), plug assembled with receptacle interior (recessed contacts). For applications where plug is energized to feed normally de-energized receptacle. Available on 30 through 400 ampere units
NOTE: 30 (2, 3, 4-pole), 60 and 100 ampere interiors can be interchanged in the field using a screwdriver. Factory conversion is required for 200 and 400 ampere products.

S4. . . . Special polarity. For use where two or more receptacles of the same ampere rating, style and number of poles are to be installed in the same area for use on different voltages and/or frequencies. Prevents insertion of a plug in a receptacle with different electrical rating. Available on 20 through 400 ampere units as follows:
Receptacle interior rotated 22½ degrees to right and plug changed to match (See photo to right)



Arktite receptacles have a cast raised rib located inside the receptacle sleeve. The location of the rib is in a specific relationship to the receptacle insulator that houses the contacts.



The mating plug has a cast groove located on the outside of the plug sleeve. This groove lines up with the raised rib.

Standard Materials:

- Metallic receptacle housings, plug and cord connector bodies – high impact strength copper-free aluminum
- Nonmetallic receptacles, plugs and cord connectors – Krydon® fiberglass-reinforced polyester material
- Back boxes: 20, 30, 60, 100 and 200 ampere – cast aluminum; 400 ampere – Feraloy® iron alloy
- Insulation (metallic products): (2-, 3-, and 4-pole) 30, 60, 100, 200, 400 ampere – fiberglass-reinforced polyester; 20, 30 ampere (5-pole) – melamine
- Contacts: pressure, solder, binding screw – brass; crimp/solder – leaded red brass; 20, 30, 60, 100 ampere – tellurium copper; 200, 400 ampere

Standard Finishes:

- Feraloy—electrogalvanized and aluminum acrylic paint
- Aluminum – natural
- Krydon fiberglass-reinforced polyester material – grey
- Fiberglass-reinforced polyester insulation – (red)
- Melamine – natural (brown)
- Brass – natural
- Leaded red brass – electro-tin-plate

§ 400A rated units are for service disconnect use only.

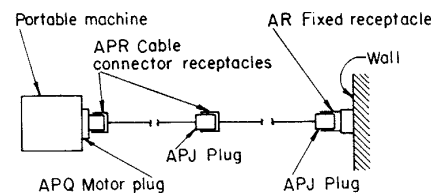
Accessories:

Accessories include a variety of angle adapters, panel adapters and back boxes for Arktite receptacles, listed on pages 990-993. Included throughout 1P are wire mesh cable grips and protective caps for Arktite plugs.

Certifications and Compliances:

- UL Standards: 1682, 514; 1010 (APJ and NPJ plugs only)
- CSA Standard: C22.2 No. 182.1

Typical installation



Arktite® Heavy Duty Circuit Breaking Plugs and Receptacles

Industrial Heavy Duty Non-Hazardous Areas

NEMA 4 Watertight

1P

Arktite Horsepower Ratings

• Locked-Rotor Interrupting

Electrical System	Ampere Rating Plug and Receptacle	Motor Horsepower†			
		120 Volts	240 Volts	480 Volts	600 Volts
Single-phase	30	2	3	7.5	10
	60	5	10	25	20
	100	10	20		
	200	15	40		
Three-phase	30	3	5	10	10
	60	10	20	40	50
	100	15	30	40	25
	200	30	60	25	15

• Emergency Interrupting

Electrical System	Ampere Rating Plug and Receptacle	H.P. Rating			
		120 Volts	240 Volts	480 Volts	600 Volts
Single-phase	30	2	3	10	10
	60	5	10	25	20
	100	7.5	20	30	30
	200	15	40	40	40
Three-phase	30	3	7.5	15	20
	60	10	20	40	50
	100	10	30	40	40
	200	20	60	50	50

Wire Sizes:

The table below lists the diameter of the wire recess in *Arktite* plug and receptacle contacts so that maximum size of bare conductor can be figured. Range of wire sizes shown in table is intended only as a guide. Depending on type of wire used (building wire, flexible or extra flexible cable) and its construction (number and size of strands), bare copper diameters vary widely.

Diameter of Wire Recess in Plug and Receptacle Contacts

Ampere Rating	Contact Type	Diameter of Recess	Wire Size‡	
			Building	Extra Flex
20	Binding Screw	N/A	#14-#12	#14-#12
30 (2, 3, & 4-pole)	Pressure	.281	#10-#6	#10-#8
30 (2, 3, & 4-pole)	Crimp/Solder	.180	#10-#8**	#10-#8
30 (5-pole)	Solder	.188	#12-#6	#12-#8
60 (2, 3, 4 & 5-pole)	Pressure	.312	#6-#4	#8-#4
60 (3 & 4-pole)	Crimp/Solder	.277	#6-#4**	#8-#4
100 (2, 3 & 4-pole)	Pressure	.390	#4-#1	#4-#2
100 (3 & 4-pole)	Crimp/Solder	.390	#2-#1**	#2-#2
200 (Std. 3 & 4-pole)	Crimp/Solder	.56	#1-4/0	#1-3/0
200 (Lg. 3 & 4-pole)	Crimp/Solder	.75	4/0-250MCM	3/0-250MCM
400 (Std. 3 & 4-pole)	Crimp/Solder	.84	250-500MCM	250-400MCM
400 (Lg. 3 & 4-pole)	Crimp/Solder	1.25	500-1000MCM	400-750MCM

** Smaller sizes may be used with well reducers – information on request.

† Horsepower ratings are based on Cooper Crouse-Hinds testing in which locked-rotor currents were interrupted by withdrawing the plug from the receptacle. It is highly recommended, however, that such use be limited to emergency conditions only; and that a horsepower rated switch be used for motor disconnect.

‡ Do not use wire size smaller than minimum size recommended.

§ 400A rated units are for service disconnect use only.

Arktite® Heavy Duty Circuit Breaking Receptacles, Plugs and Connectors

20 A, 600 VAC/250 VDC, 50**-400 hertz

NEMA 4 Watertight

1P



Receptacle with Back Box

Config.	Hub Size	Descrip.	Cat No. #
2W 2P	1/2	Spring Door	ARE2211
	1/2	Threaded Cap	ARE2271
2W 2P	3/4	Spring Door	ARE2212
	3/4	Threaded Cap	ARE2272



Receptacle

Config.	Descrip.	Cat No. #
2W 2P	Spring Door	AR221
	Threaded Cap	AR227



Plug

Config.	Cable Dia.	Descrip.	Cat No. #
2W 2P	.250-500	Fastening Ring	APJ2271
	.250-500	W/O Fastening Ring	APJ2251
2W 2P	.500-875	Fastening Ring	APJ2273
	.500-875	W/O Fastening Ring	APJ2253

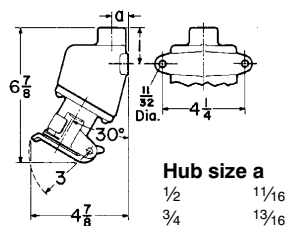


Connector

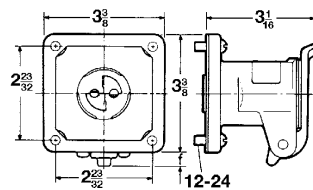
Config.	Cable Dia.	Descrip.	Cat No. #
2W 2P	.250-500	Connector	APR2251
	.500-850	Connector	APR2253

Dimensions

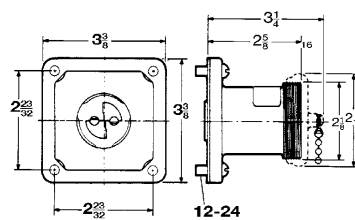
ARE Assembly



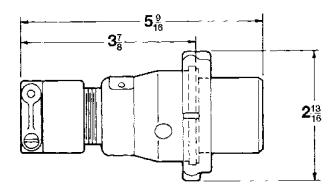
AR Receptacle - Spring Door



AR Receptacle - Open and with cap



APJ Plug



NOTE: For listing of additional back boxes, see pages 999 and 991.

** For use on systems less than 60 hertz the receptacles, plugs and connectors are for disconnect use only.

1P

Arktite® Heavy Duty Circuit Breaking Receptacle Assemblies and Housings

30 A, 600 VAC/250 VDC, 50**-400 hertz

NEMA 4 Watertight

Receptacle Assembly



Receptacle



Mating Plug



Mating Connector



With ARE Back Boxes Style 1

Receptacle Housings Only Style 1

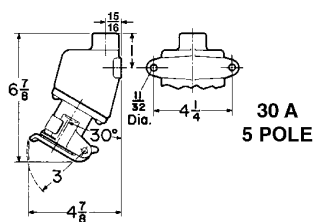
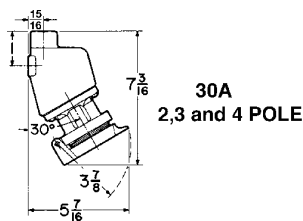
Mating APJ Plugs† Style 1

Mating APR Connectors Style 1

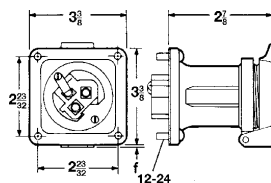
Description	Hub‡ Size	Spring Door Cat. #	Spring Door Cat. #	Threaded Cap Only Cat. #	Cat. #	Cable Dia.	Cat. #	Cable Dia.
2-wire, } 2-pole }	1/2 3/4	ARE3211 ARE3212	AR321	AR327	APJ3275	0.39 to 1.20	APR3255	0.39 to 1.20
3-wire, } 3-pole }	3/4 1	ARE3312 ARE3313	AR331	AR337	APJ3375	0.39 to 1.20	APR3355	0.39 to 1.20
4-wire, } 4-pole }	3/4 1	ARE3412 ARE3413	AR341	AR347	APJ3475	0.39 to 1.20	APR3455	0.87 to 1.02
5-wire, } 5-pole }	1	ARE3513	AR351		APJ3573	.500 to .875	APR3553	.500 to .875
Style 2			Style 2		Style 2		Style 2	
2-wire, } 3-pole }	3/4 1	ARE3322 ARE3323	AR332	AR338	APJ3575	.875 to 1.375	APR3555	.875 to 1.375
3-wire, } 4-pole }	3/4 1	ARE3422 ARE3423	AR342	AR348	APJ3485	0.39 to 1.20	APR3465	0.39 to 1.20
4-wire, } 5-pole }	1	ARE3523	AR352		APJ3583 APJ3585	.500 to .875 .875 to 1.375	APR3563 APR3565	.500 to .875 .875 to 1.375

Dimensions

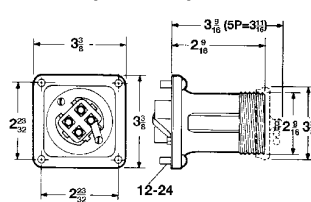
ARE Assembly



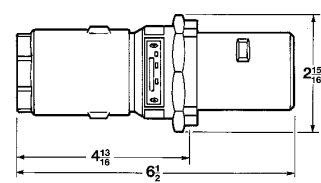
AR Receptacle - Spring Door



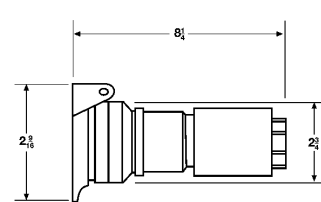
AR Receptacle - Open and with cap



Plug



Connector



** For use on systems less than 60 hertz the receptacles, plugs and connectors are for disconnect use only.

Arktite® Heavy Duty Circuit Breaking Receptacle Assemblies and Housings

30 A, 600 VAC/250 VDC, 50**-400 hertz

NEMA 4 Watertight

1P

Plug Closure Caps:

Application:

- CPK caps for *Arktite* plugs are used:
- where portable equipment is on a standby basis and plugs are not in use
 - to effectively protect insulation and contacts from excessive moisture, dirt, dust and corrosion
 - with 30, 60, 100 and 200 ampere plugs with fastening ring and standard 200 ampere plugs for the clamp door housing



Config.	Cat No. #
2P & 3P & 4P	CPK13
5P	CPK32

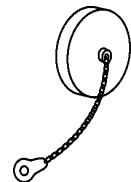
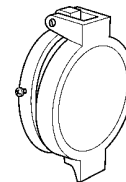
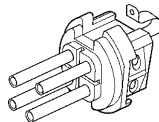
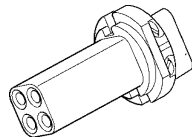
Standard Materials:

- Copper-free aluminum

Standard Finishes:

- Natural

Replacement Parts:



Config.	Receptacle Interior	Plug Interior	Spring Door	Screw Cap
2W 2P	ATP275	ATP270	QE50	QE13
2W 3P	ATP278	ATP273		
3W 3P	ATP276	ATP271		
3W 4P	ATP279	ATP274		
4W 4P	ATP277	ATP272	N/A	N/A
4W 5P	ATP125	ATP109		
5W 5P	ATP94	ATP73		

Replacement Pin & Sleeve Contacts:

Description	Recep	Plug
Available as a kit only. 5 phase contacts & 1 ground contact included	AR30CONKIT	AP30CONKIT

** For use on systems less than 60 hertz the receptacles, plugs and connectors are for disconnect use only.

1P

Arktite® Heavy Duty Circuit Breaking Receptacle Assemblies and Housings

60 A, 600 VAC/250 VDC, 50**-400 hertz

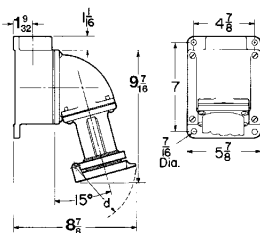
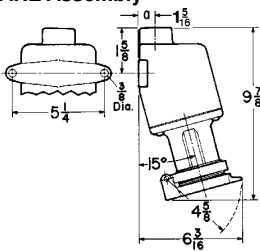
NEMA 4 Watertight



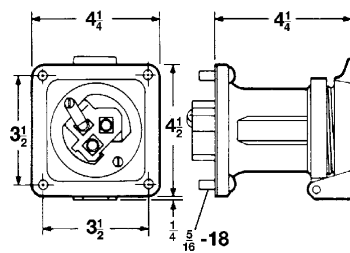
Style 1	With AJ Back Boxes and Angle Adapters			with ARE Back Boxes	Receptacle Housing Only		Cable Dia.	Cat. #	Cat. #
	Description	Hub Size	Spring Door Cat. #	Threaded Cap Only Cat. #	Spring Door Cat. #	Spring Door Cat. #			
2-wire, 2-pole	1	AREA6213		ARE6213	AR621	AR627	0.50 to 1.45	APJ6275	APR6255
	1¼	AREA6214		ARE6214					
3-wire, 3-pole	1	AREA6313		ARE6313	AR631	AR637	0.50 to 1.45	APJ6375	APR6355
	1¼	AREA6314		ARE6314					
4-wire, 4-pole	1¼	AREA6414		ARE6414	AR641		0.50 to 1.45	APJ6475	APR6455
	1½	AREA6415		ARE6415					
5-wire, 5-pole	1¼		AREA6574			AR657	0.50 to 1.45	APJ6575	
	1½		AREA6575						
Style 2									
2-wire, 3-pole	1	AREA6323		ARE6323	AR632	AR638	0.50 to 1.45	APJ6385	APR6365
	1¼	AREA6324		ARE6324					
3-wire, 4-pole	1¼	AREA6424		ARE6424	AR642	AR648	0.50 to 1.45	APJ6485	APR6465
	1½	AREA6425		ARE6425					
4-wire, 5-pole	1¼		AREA6584			AR658	0.75 to 1.45	APJ6585	APR6585
	1½		AREA6585						

Dimensions

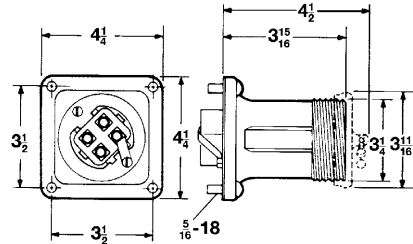
ARE Assembly



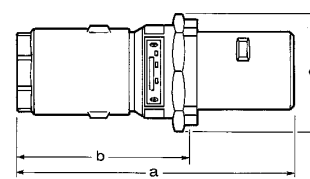
AR Receptacle - Spring Door



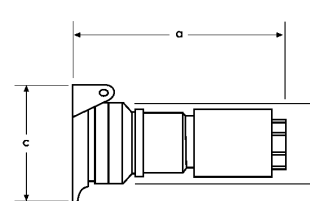
AR Receptacle - Open and with cap



APJ Plug



APR Connector



Config	Plug			Connector		
	a	b	c	a	b	c
2P or 3P	8½	5¾	3⅝	6½	3⅝	2⅟16
4P	8½	5⅓16	3¾	8¼	3⅝	2⅟16
5P	9	6⅓16	47/16	8¼	3⅝	3¼

** For use on systems less than 60 hertz the receptacles, plugs and connectors are for disconnect use only.

Arktite® Heavy Duty Circuit Breaking Receptacle Assemblies and Housings

60 A, 600 VAC/250 VDC, 50**-400 hertz

NEMA 4 Watertight

1P

Plug Closure Caps:

Application:

- CPK caps for *Arktite* plugs are used:
- where portable equipment is on a standby basis and plugs are not in use
 - to effectively protect insulation and contacts from excessive moisture, dirt, dust and corrosion
 - with 30, 60, 100 and 200 ampere plugs with fastening ring and standard 200 ampere plugs for the clamp door housing



Config.	Cat No. #
2P & 3P	CPK32
4P	CPK34

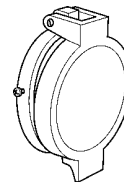
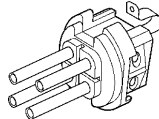
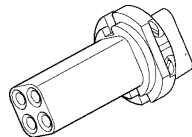
Standard Materials:

- Copper-free aluminum

Standard Finishes:

- Natural

Replacement Parts:



Config.	Receptacle Interior	Plug Interior	Spring Door	Screw Cap
2W 2P	ATP295	ATP290	QE51	QE32
2W 3P	ATP298	ATP293		
3W 3P	ATP296	ATP291		
3W 4P	ATP299	ATP294	QE52	QE34
4W 4P	ATP297	ATP292		
4W 5P	ATP385	ATP387	N/A	AR:11393B
5W 5P	ATP384	ATP386	N/A	

Replacement Pin & Sleeve Contacts:

Description	Recep	Plug
Available as a kit only. 5 phase contacts & 1 ground contact included	AR60CONKIT	AP60CONKIT

** For use on systems less than 60 hertz the receptacles, plugs and connectors are for disconnect use only.

1P

Arktite® Heavy Duty Circuit Breaking Receptacle Assemblies and Housings

100 A, 600 VAC/250 VDC, 50**-400 hertz

NEMA 4 Watertight

Receptacle Assembly



Receptacle



Mating Plug



Mating Connector

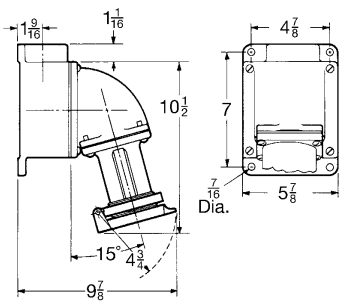


Style 1

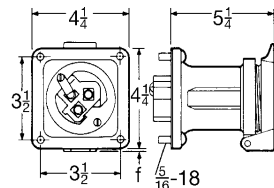
Description	Hub Size	Spring Door Cat. #	Receptacle Housings Only		Cable Dia.	Cat. #	Cat. #
			Spring Door Cat. #	Threaded Cap Only Cat. #			
2-wire, 2-pole }	1¼	AREA10214	AR1021	AR1027	0.875 to 1.70	APJ10277	APR10257
	1½	AREA10215					
3-wire, 3-pole }	1¼	AREA10314	AR1031	AR1037	0.875 to 1.70	APJ10377	APR10357
	1½	AREA10315					
4-wire, 4-pole }	1½	AREA10415	AR1041	AR1047	0.875 to 1.70	APJ10477	APR10457
	2	AREA10416					
Style 2			Style 2		Style 2		
2-wire, 3-pole }	1¼	AREA10324	AR1032	AR1038	0.875 to 1.70	APJ10387	APR10367
	1½	AREA10325					
3-wire, 4-pole }	1½	AREA10425	AR1042	AR1048	0.875 to 1.70	APJ10487	APR10467
	2	AREA10426					

Dimensions

ARE Assembly

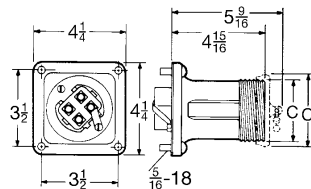


AR Receptacle - Spring Door



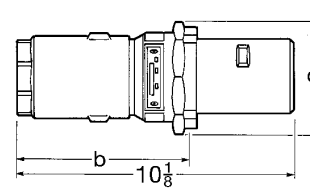
No. Poles	f
2 or 3	9/32
4	13/32

AR Receptacle - Open and with cap



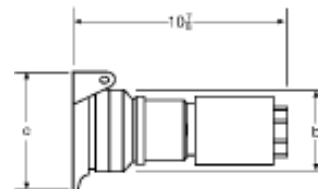
No. Poles	Housing	c
2 or 3	open	3 3/16
4	open	3 7/16
2 or 3	with cap	3 11/16
4	with cap	3 7/8

APJ Plug



No. Poles	b	c
3	6 9/16	3 3/4
4	6 5/8	4 1/8

APR Connector



No. Poles	b	c
3	3 3/8	3 3/16
4	3 1/2	3 7/16

** For use on systems less than 60 hertz the receptacles, plugs and connectors are for disconnect use only.

Arktite® Heavy Duty Circuit Breaking Receptacle Assemblies and Housings

100 A, 600 VAC/250 VDC, 50**-400 hertz

NEMA 4 Watertight
Dimensions Pages 947, 961, 964-966

1P

Plug Closure Caps:

Application:

- CPK caps for *Arktite* plugs are used:
- where portable equipment is on a standby basis and plugs are not in use
 - to effectively protect insulation and contacts from excessive moisture, dirt, dust and corrosion
 - with 30, 60, 100 and 200 ampere plugs with fastening ring and standard 200 ampere plugs for the clamp door housing



Config.	Cat No. #
2P & 3P	CPK62
4P	CPK64

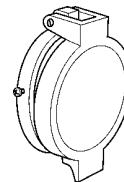
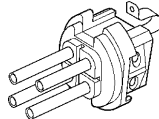
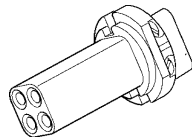
Standard Materials:

- Copper-free aluminum

Standard Finishes:

- Natural

Replacement Parts:



Config.	Receptacle Interior	Plug Interior	Spring Door	Screw Cap
2W 2P	ATP315	ATP310	QE53	QE62
2W 3P	ATP318	ATP313		
3W 3P	ATP316	ATP311	QE54	QE64
3W 4P	ATP319	ATP314		
4W 4P	ATP317	ATP312	N/A	N/A
4W 5P	N/A	N/A		
5W 5P	N/A	N/A		

Replacement Pin & Sleeve Contacts:

Description	Recep	Plug
Available as a kit only. 5 phase contacts & 1 ground contact included	AR100CONKIT	AP100CONKIT

** For use on systems less than 60 hertz the receptacles, plugs and connectors are for disconnect use only.

1P

Arktite® Heavy Duty Circuit Breaking Receptacle Assemblies

200 A, 600 VAC/250 VDC, 50-400 hertz**

Weatherproof

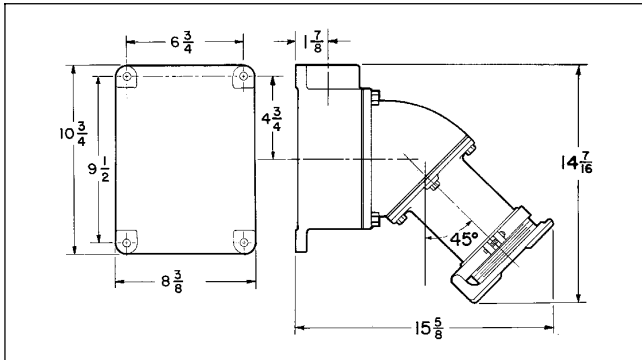
See pages 966-969 for general Application, Features, Grounding, Standard Materials, Standard Finishes, Options, Accessories, Compliances, Electrical Rating Ranges, and Wire Sizes.

Features:

- Grounding contact wire terminators will accommodate ground wire of same size as phase wire.
- Spring band contact design provides multiple points of electrical contact. Improves electrical reliability and significantly reduces effort required for insertion and withdrawal
- Crimp/solder type contacts are standard
- Large wire wells are available for "extra flexible" wire
- Larger wire well size connectors will interchange with connectors of other wire well size of same amperage and contact configuration.
- Self-closing spring doors on receptacles and cord connectors provide environmental sealing
- Threaded nuts provide positive plug retention
- Two piece plug and cord connector design provide easy installation

NOTES:

1. For listing of additional back boxes, see page 991.
2. S22 suffix for reverse interiors is available from factory only. Field conversion cannot be done.
3. Replacement interiors for standard units vs. S22 units vary in length. Specify the unit type when ordering parts.

Dimensions**AREA Assembly****Plug Closure Caps:****Application:**

- CPK caps for Arktite plugs are used:
- where portable equipment is on a standby basis and plugs are not in use
 - to effectively protect insulation and contacts from excessive moisture, dirt, dust and corrosion
 - with 30, 60, 100 and 200 ampere plugs with fastening ring and standard 200 ampere plugs for the clamp door housing



Config.	Cat No. #
3P	CPK102
4P	CPK104

Standard Materials:

- Copper-free aluminum

Standard Finishes:

- Natural

Wire Mesh Grips:**Application:**

- Wire mesh grips are used:
- to provide secure cable termination
 - to extend cable life
 - with 20, 200 and 400 ampere plugs

**Features:**

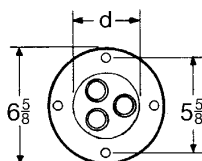
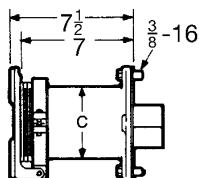
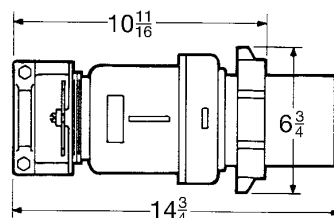
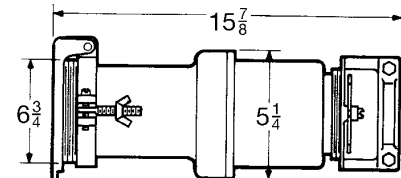
- Eliminate sharp radius of cable bend at the point where cable enters plug, thereby reducing cable failure
- Absorb longitudinal stresses placed on the point of termination caused by pulling the cable
- Gripping action increases in direct proportion to amount of tension applied to cable

Standard Material & Finishes:

- Stainless steel wire braid - Natural

Ordering Information:

Plug Cable Range	Grip Range	Nominal Grip Length - Inches	Grip Cat. #
1.375 to 1.875	1.375 to 1.625	8	K163
	1.625 to 1.875	11	K188
1.875 to 2.500	1.875 to 2.000	10	K200
	2.000 to 2.250	11 3/4	K225

AR Receptacle**No. Poles**3
4**c**4 3/16
4 9/16**d**3 1/4
3 5/8**AP Plug****APR Connector****1P** Heavy Duty Plugs and Receptacles

** For use on system less than 60 hertz the receptacles, plugs and connectors are for disconnect use only.

Arktite® Heavy Duty Circuit Breaking Receptacle Assemblies

200 A, 600 VAC/250 VDC, 50**-400 hertz

Weatherproof

1P

Receptacle Assembly



With AJ Back Boxes and Angle Adapters

Receptacle



Receptacle Housings only

Mating Plug



Mating Connector



Style 1 – Wire Well Takes .56" Maximum Conductor Size

Description	Hub Size	Spring Door Cover Cat. #	Spring Door Cat. #	Cable Dia.	Plug Cat. #	Connector Cat. #
3-wire, 3-pole	1½	AREA20315	AR2031	0.875 to 1.375	AP20355	APR20315
	2	AREA20316		1.375 to 1.875	AP20357	APR20317
	2½	AREA20317		1.875 to 2.500	AP20358	APR20318
4-wire, 4-pole	2	AREA20416	AR2041	0.875 to 1.375	AP20455	APR20415
	2½	AREA20417		1.375 to 1.875	AP20457	APR20417
				1.875 to 2.500	AP20458	APR20418

Style 1 – Wire Well Takes .75" Maximum Conductor Size

3-wire, 3-pole	1½	AREA203125	AR20312	1.375 to 1.875 1.875 to 2.500	AP203511	APR203111
	2	AREA203126			AP203512	APR203112
	2½	AREA203127				
4-wire, 4-pole	2	AREA204126	AR20412	1.375 to 1.875	AP204511	APR204111
	2½	AREA204127		1.875 to 2.500	AP204512	APR204112
					2.500 to 3.000	AP204513

Style 2 – Wire Well Takes .56" Maximum Conductor Size

2-wire, 3-pole	1½	AREA20325	AR2032	0.875 to 1.375 1.375 to 1.875 1.875 to 2.500	AP20365	APR20325
	2	AREA20326			AP20367	APR20327
	2½	AREA20327			AP20368	APR20328
3-wire, 4-pole	1½	AREA20425	AR2042	0.875 to 1.375 1.375 to 1.875 1.875 to 2.500	AP20465	APR20425
	2	AREA20426			AP20467	APR20427
	2½	AREA20427			AP20468	APR20428

Style 2 – Wire Well Takes .75" Maximum Conductor Size

2-wire, 3-pole	1½	AREA203225	AR20322	0.875 to 1.375 1.375 to 1.875 1.875 to 2.500	AP203610	APR203210
	2	AREA203226			AP203611	APR203211
	2½	AREA203227			AP203612	APR203212
3-wire, 4-pole	1½	AREA204225	AR20422	1.375 to 1.875 1.875 to 2.500	AP204611	APR204211
	2	AREA204226			AP204612	APR204212
	2½	AREA204227				

Option:

- Mechanical lug wire conductor terminations. Add "L" to catalog prefix i.e. : ARL2042

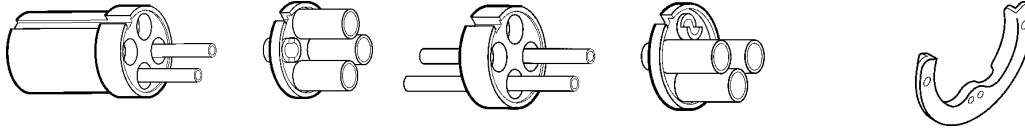


1P

Arktite® Heavy Duty Circuit Breaking Receptacle Assemblies

200 A, 600 VAC/250 VDC, 50**-400 hertz

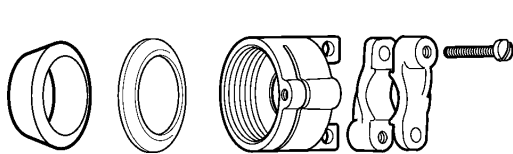
Weatherproof

200A Replacement Parts**200A Standard and S4**

	Receptacle Interior		Plug Interior		Brass Retaining Shoe	
	.56 wire well	.75 wire well	.56 wire well	.75 wire well	.56 wire well	.75 wire well
2W 3P	ATP401	ATP402	ATP433	ATP434	0490335	0490335
3W 3P	ATP397	ATP398	ATP429	ATP430	0490327	0490328
3W 4P	ATP403	ATP404	ATP435	ATP436	0490337	0490337
4W 4P	ATP399	ATP400	ATP431	ATP432	0490331	0490332

200A ST22 and S4 S22

	Receptacle Interior		Plug Interior		Brass Retaining Shoe	
	.56 wire well	.75 wire well	.56 wire well	.75 wire well	.56 wire well	.75 wire well
2W 3P	ATP417	ATP418	ATP449	ATP450	0490335	0490335
3W 3P	ATP413	ATP414	ATP445	ATP446	0490327	0490328
3W 4P	ATP419	ATP420	ATP451	ATP452	0490337	0490337
4W 4P	ATP415	ATP416	ATP447	ATP448	0490331	0490332

**Cord Grip Assembly**

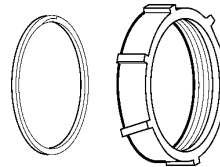
Cord Diameter Range

.875 - 1.375

1.375 - 1.875

1.875 - 2.500

AP2 KIT1 M80
AP2 KIT2 M80
AP2 KIT3 M80

**Plug Clamp Nut**

2W 3P

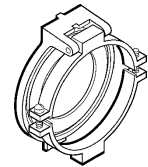
3W 3P

AP:0401965

2W 3P

3W 3P

AP:0401964

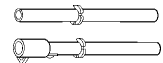
**Rec Spring Door**

AR:0401502-2

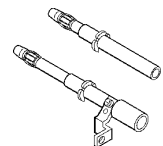
AR:0401502-1

Replacement Pin & Sleeve Contacts**200A Standard & S4**

	Receptacle		Plug	
	.56 wire well	.75 wire well	.56 wire well	.75 wire well
Phase Contact	0490339	0490340	0490319	0490320
Ground Contact	0490343	0490344	0490323	0490324

**200A S22 & S4 S22**

	Receptacle		Plug	
	.56 wire well	.75 wire well	.56 wire well	.75 wire well
Phase Contact	0490351	0490352	0490355T	0490356
Ground Contact	0490347	0490348	0490359	0490360



Arktime® Heavy Duty Receptacle Assemblies

Weatherproof

1P

400 A, 600 VAC/250 VDC, 50-400 hertz

Features:

- Grounding contact wire terminators will accommodate ground wire of same size as phase wire
- Spring band contact design provides multiple points of electrical contact. Improves electrical reliability and significantly reduces effort required for insertion and withdrawal
- Crimp/solder type contacts are standard.
- Large wire wells are available for "extra flexible" wire
- Larger wire well connectors will interchange with connectors of other wire well size, of same amperage and contact configuration.
- Self-closing spring doors on receptacles and cord connectors provide environmental sealing
- Threaded nuts provide positive plug retention
- Two piece plug and cord connector design provide easy installation
- For disconnect use only – not for current interrupting

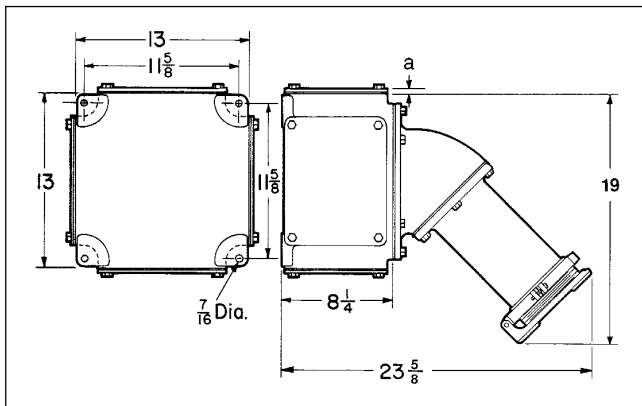
NOTES:

1. For listing of additional back boxes, see page 991. Illustration shows 3 blank plates and 1 hub plate.
2. S22 suffix for reverse interiors is available from factory only. Field conversion cannot be done.
3. Replacement interiors for standard units vs. S22 units vary in length. Specify the unit type when ordering parts.

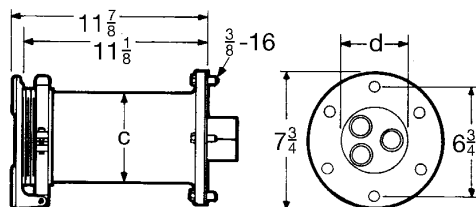
Dimensions

AREX Assemblies

Description	a
With blank hub plate	5/16
With hub plate max.	45/8



AR Receptacles



No. Poles	c	d
3	5 3/16	4 9/16
4	5 13/16	4 11/16

Wire Mesh Grips



Application:

Wire mesh grips are used:

- to provide secure cable termination
- to extend cable life
- with 20, 200 and 400 ampere plugs

Features:

- Eliminate sharp radius of cable bend at the point where cable enters plug, thereby reducing cable failure
- Absorb longitudinal stresses placed on the point of termination caused by pulling the cable
- Gripping action increases in direct proportion to amount of tension applied to cable

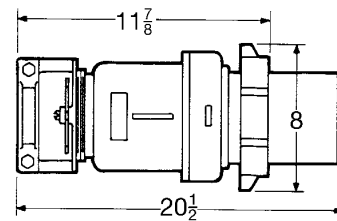
Standard Material & Finishes:

- Stainless steel wire braid – Natural

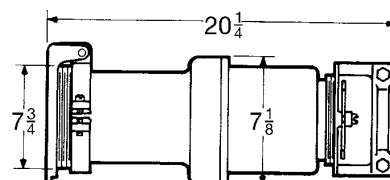
Ordering Information:

Plug Cable Range	Grip Range	Nominal Grip Length – Inches	Grip Cat. #
1.375 to 1.875	1.375 to 1.625	8	K163
	1.625 to 1.875	11	K188
1.875 to 2.500	1.875 to 2.000	10	K200
	2.000 to 2.250	11 3/4	K225

AP Plugs



APR Connectors



1P**Arktite® Heavy Duty Receptacle Assemblies**

Weatherproof

400 A, 600 VAC/250 VDC, 50-400 hertz**Receptacle Assembly****Receptacle****Mating Plug****Mating Connector****With AJ Back Boxes† and Angle Adapters****Style 1 – Wire Well Takes .84" Maximum Conductor Size**

Description	Hub Size	Spring Door Cover Cat. #	Spring Door Cat. #	Cable Dia.	Plug Cat. #	Connector Cat. #
3-wire, 3-pole	2½	AREX40317	AR4031	1.375 to 1.875 1.875 to 2.500	AP40357 AP40358	APR40317 APR40318
	3	AREX40318				
4-wire, 4-pole	2½	AREX40417	AR4041	1.375 to 1.875 1.875 to 2.500	AP40457 AP40458	APR40417 APR40418
	3	AREX40418				

Receptacle Housings only**Style 1 – Wire Well Takes 1.25" Maximum Conductor Size**

3-wire, 3-pole	3	AREX403128	AR40312	2.500 to 3.000 3.000 to 3.800	AP403510 AP403512	APR403110 APR403112
	3½	AREX403129				
	4	AREX4031210				
4-wire, 4-pole	4	AREX4041210	AR40412	2.500 to 3.000 3.000 to 3.800	AP404510 AP404512	APR404110 APR404112
	5	AREX4041212				

Style 2 – Wire Well Takes .84" Maximum Conductor Size

2-wire, 3-pole	2	AREX40326	AR4032	1.375 to 1.875 1.875 to 2.500	AP40367 AP40368	APR40327 APR40328
	2½	AREX40327				
	3	AREX40328				
3-wire, 4-pole	2½	AREX40427	AR4042	1.375 to 1.875 1.875 to 2.500	AP40467 AP40468	APR40427 APR40428
	3	AREX40428				

Style 2 – Wire Well Takes 1.25" Maximum Conductor Size

2-wire, 3-pole	3	AREX403228	AR40322	2.500 to 3.000 3.000 to 3.500	AP403610 AP403612	APR403210 APR403212
	3½	AREX403229				
	4	AREX4032210				
3-wire, 4-pole	4	AREX4042210	AR40422	2.500 to 3.000 3.000 to 3.500	AP404610 AP404612	APR404210 APR404212
	5	AREX4042212				

† Furnished with cable grip and neoprene bushing.

‡ Hub plates and blank plates may be interchanged to permit conduit feed from bottom or sides.