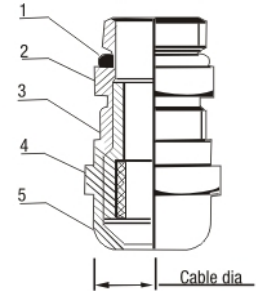
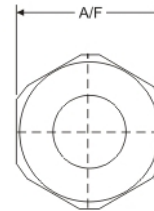
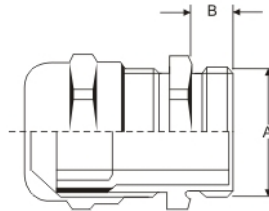


# NICKEL PLATED BRASS GLAND - IP68 RATING - PG THREAD



Mounting Thread		Min. Cable Dia. (mm)	Max. Cable Dia. (mm)	Width A/F (mm)	Product Code
A Dia. (mm)	B Leng. (mm)				
7.0	6.0	2.0	2.0	14.0	HIP 68 - 7
9.0	6.0	4.0	8.0	17.0	HIP 68 - 9
11.0	6.0	5.0	10.0	20.0	HIP 68 - 11
13.5	7.0	6.0	12.0	22.0	HIP 68 - 13.5
16.0	7.0	9.0	14.0	24.0	HIP 68 - 16
21.0	8.0	12.0	17.0	30.0	HIP 68 - 21
29.0	8.0	18.0	25.0	26.0	HIP 68 - 29
36.0	16.0	22.0	32.0	50.0	HIP 68 - 36
42.0	16.0	30.0	38.0	58.0	HIP 68 - 42
48.0	16.0	32.0	42.0	34.0	HIP 68 - 48